

Sign up!

TO SHAPE OUR REEF'S FUTURE

There's never been a more important time to contribute to Reef management

As a Local Marine Advisory Committee member, you will be providing advice that supports Reef management, sharing information between Reef stakeholders and encouraging actions that reduce threats to the Reef.

There are 12 Local Marine Advisory Committees along the Queensland coast that advise the Great Barrier Reef Marine Park Authority about all things marine and coastal.

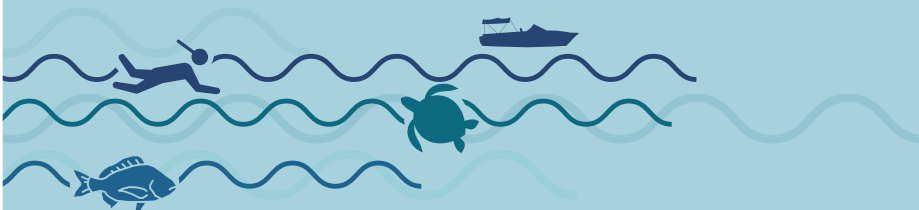
As the Marine Park Authority's public consultation channel, committee members often get firsthand information about Reef matters and have an opportunity to network with other industry leaders.

Who should apply?

We're seeking representatives from a range of interest groups: First Nations peoples, recreation, fishing, tourism, conservation, ports and shipping, education, agriculture, and other industry sectors.

Committees meet four times a year for a three-year term. We encourage a mix of backgrounds, experience and expertise and people aged 18–30 are particularly encouraged to apply.

Find out more, visit www.gbrmpa.gov.au or call 07 4750 0700.



Australian Government
**Great Barrier Reef
Marine Park Authority**

**Local Marine
Advisory Committee**