

Whitsundys Plan of Management Zoning and Settings Tongue Bay, Hill Inlet and Whitehaven Beach



Australian Government
Great Barrier Reef
Marine Park Authority

Whitsundays Planning Area Boundaries

- Whale Protection Area boundary
- Regular Aircraft Landing Area

Setting Areas

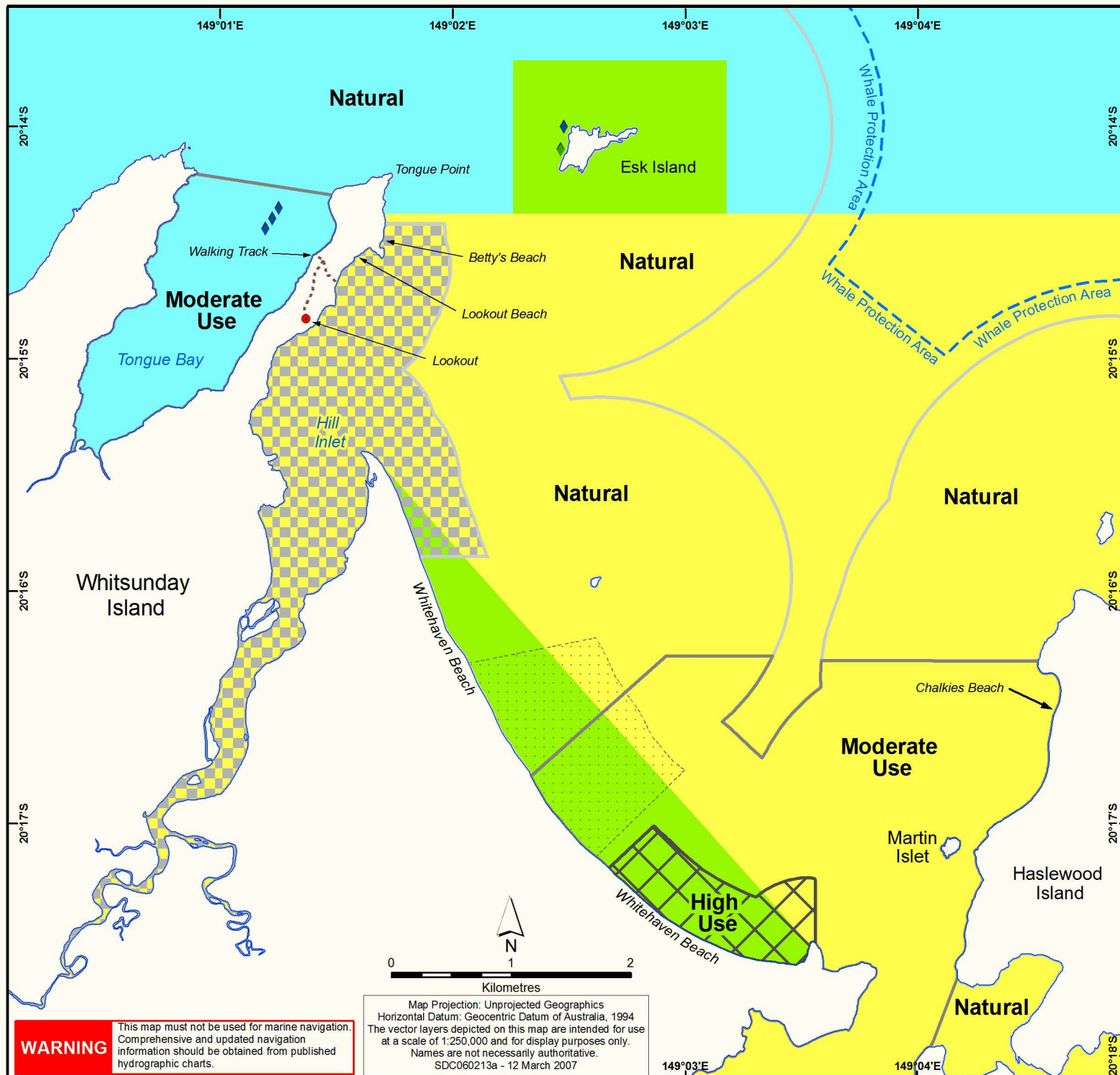
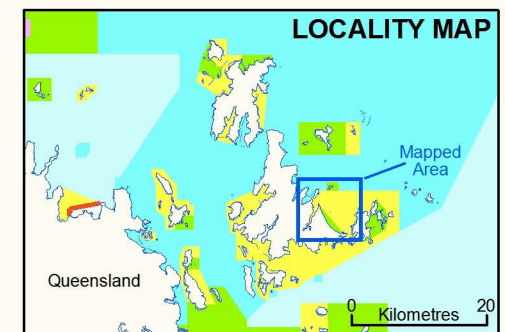
- High Use: Setting 2 (max.vessel length: 35m)
- Moderate Use: Setting 3 (max.vessel length: 35m)
- Natural: Setting 4 (max.vessel length: 35m)
- Protected: Setting 5 (refer to individual permit)

GBRMP Zoning

- General Use
- Habitat Protection
- Conservation Park
- Marine National Park

Moorings

Class of Mooring (Public Mooring)	Maximum Vessel Length	Maximum Wind Speed
B	20m - monohull 18m - multihull	34knots
C	25m monohull 22m multihull	34 knots



WARNING

This map must not be used for marine navigation. Comprehensive and updated navigation information should be obtained from published hydrographic charts.

Map Projection: Unprojected Geographics
Horizontal Datum: Geocentric Datum of Australia, 1994
The vector layers depicted on this map are intended for use at a scale of 1:250,000 and for display purposes only.
Names are not necessarily authoritative.
SDC060213a - 12 March 2007