

# Haughton River Catchment

## Catchment Information

### Description

Area (km <sup>2</sup> )	4044
% Gauged	68
Mean Discharge Yr (km <sup>3</sup> )	0.7
Rainfall (mm)	888
Runoff (mm/m <sup>2</sup> )	183
Runoff/Rainfall Ratio	21

### Land Use

Population	10343
Clearing (km <sup>2</sup> )	3120
% Cleared	77
Area under Grazing (km <sup>2</sup> )	3441
Area under Sugar (km <sup>2</sup> )	528
Area under Horticulture (km <sup>2</sup> )	21

### Pesticide Application

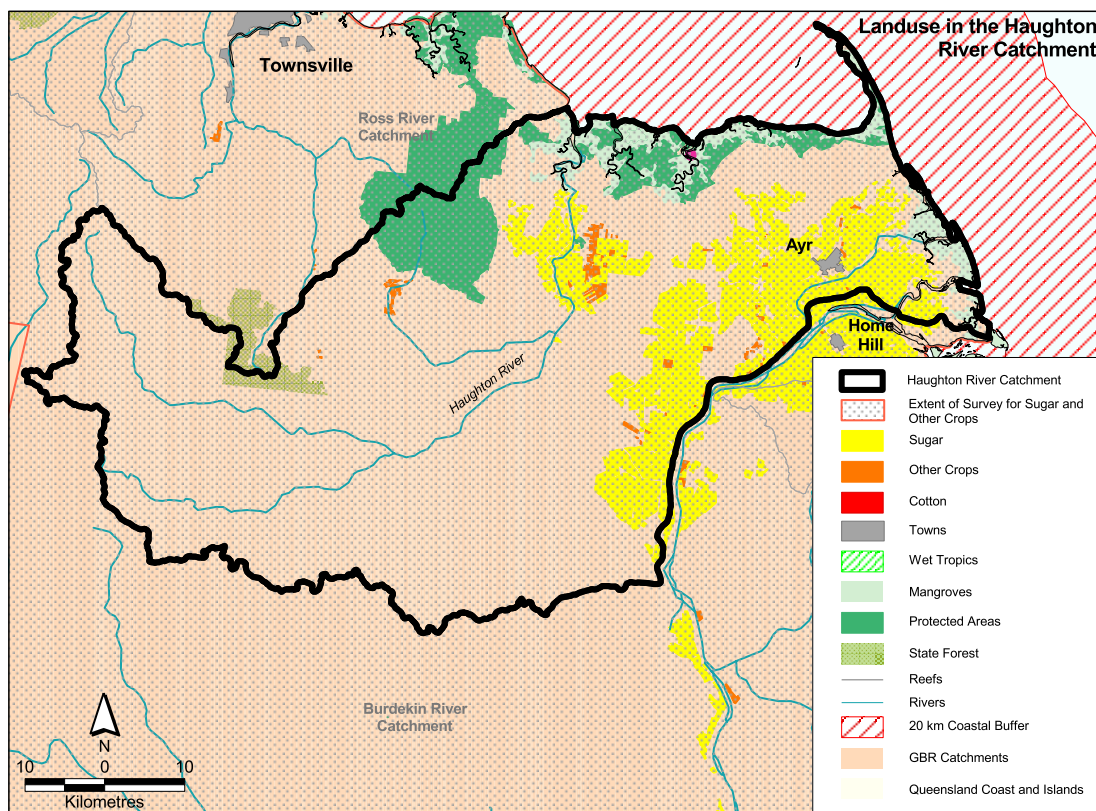
(Kg Active Ingredient/Yr)

Atrazine	24299
Diuron	4123
2-4D	6887
Chlorpyrifos	285
MEMC	247

## Catchment Targets

	1850 T/yr	Current T/yr	Current T/ km <sup>3</sup>	ratio	2011 % Red'n	2011 T/yr Target	2011 T/ km <sup>3</sup> Target
Sediment Export	17000	172454	232432	10.1	33	115544	155729
Total N Export	180	801	1082	4.5	50	401	541
Total P Export	9	175	237	19.4	50	88	119

Data Confidence Index = 1



## *Haughton River Catchment*

The Haughton River catchment covers an area of 4044 km<sup>2</sup>. Grazing is the dominant land use 3441 km<sup>2</sup>. Other land uses are sugarcane farming 528 km<sup>2</sup> and horticulture 21 km<sup>2</sup>. State forests and timber reserves occupy 30 km<sup>2</sup> and protected areas cover 328 km<sup>2</sup>. Sediment export is classified as medium risk, and total nitrogen and total phosphorus exports are classified as high risk in the Haughton River catchment.

### *Issues in the catchment:*

- Soil erosion is widespread.
- Potential salinity problems occur in some areas as a result from extensive clearing.
- Invasion of exotic weeds along waterways, disturbed clay and/or soil areas.
- Significant contribution of nutrient and pesticides from the flood plain.
- Most cultivation occurs on the river delta.
- Many fauna species are threatened in the catchment.
- Approximately 80% of the catchment has been cleared for grazing.
- Approximately 8% of the catchment is within protected areas.
- Commercial and recreational fishery.
- Close proximity to significant seagrass beds/dugong protection areas.
- Recreational marine use.

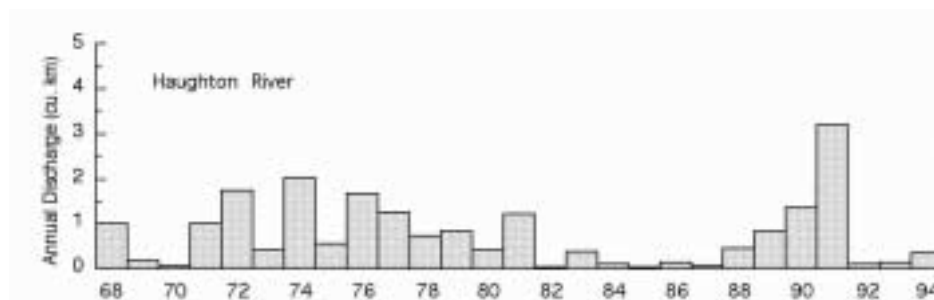


Figure 18. Water discharge patterns in the Haughton River.