

Boyne River Catchment

Catchment Information

Description

Area (km ²)	2590
% Gauged	88
Mean Discharge Yr (km ³)	0.3
Rainfall (mm)	968
Runoff (mm/m ²)	112
Runoff/Rainfall Ratio	12

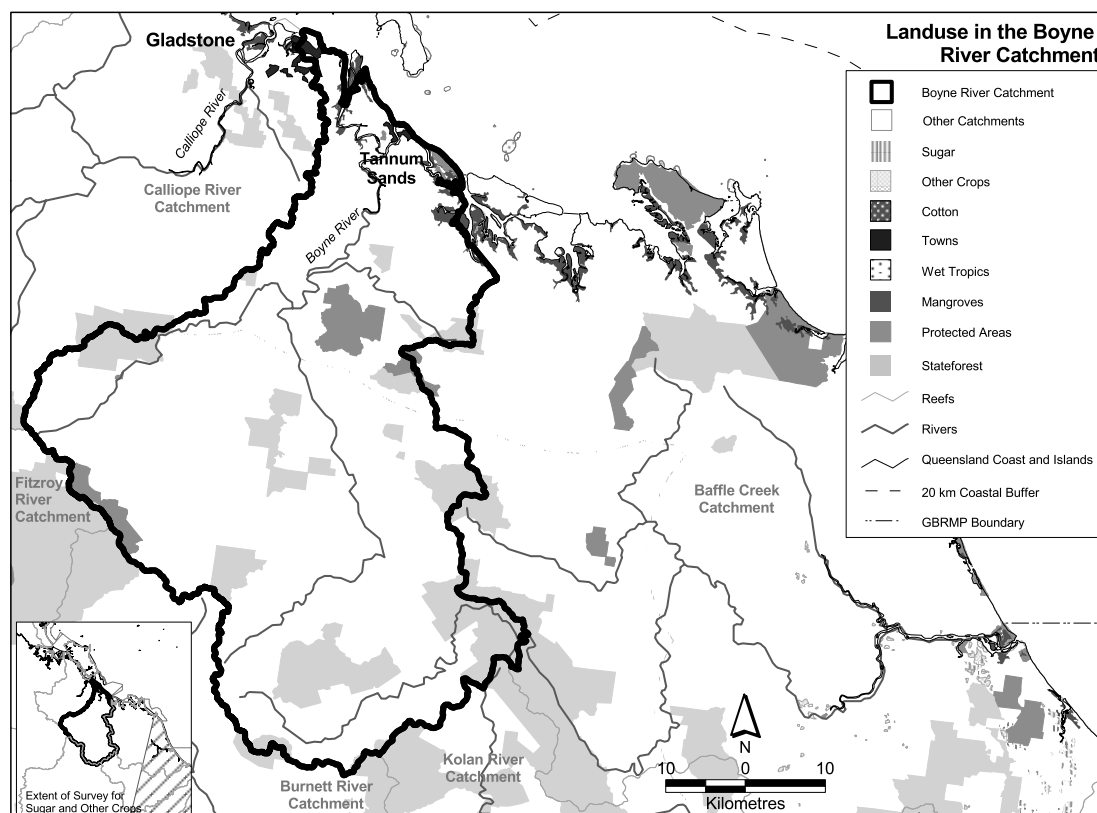
Land Use

Population	5009
Clearing (km ²)	1959
% Cleared	76
Area under Grazing (km ²)	2226
Area under Sugar (km ²)	N/A
Area under Horticulture (km ²)	N/A

Catchment Targets

	1850 T/yr	Current T/yr	Current T/ km ³	ratio	2011 % Red'n	2011 T/yr Target	2011 T/ km ³ Target
Sediment Export	2000	16974	58621	8.5	33	11372	39276
Total N Export	71	314	1082	4.4	33	210	725
Total P Export	4	69	237	17.3	33	46	159

Data Confidence Index = 1



Boyne River Catchment

The Boyne River catchment covers an area of 2590 km². Grazing is the dominant land use occupying approximately 2226 km². State forest and timber reserves occupy 332 km² and protected areas cover 74 km². Data is not available for other land uses in the catchment. Sediment, total nitrogen and total phosphorus exports are classified as medium risk in the Boyne River Catchment.

Issues in the catchment:

- Grazing land has been cleared on slopes and marginal areas which has resulted in erosion and salinity problems.
- Approximately 76% of the catchment has been cleared mostly for grazing.
- Only 3% of the catchment is within protected areas.
- Weirs and dams have modified river flows.
- Heavy industrial development in the catchment.
- Species are endangered due to land use and changes in vegetation cover.
- Commercial and recreational fisheries.
- Proximity to seagrass beds and dugong protection area.

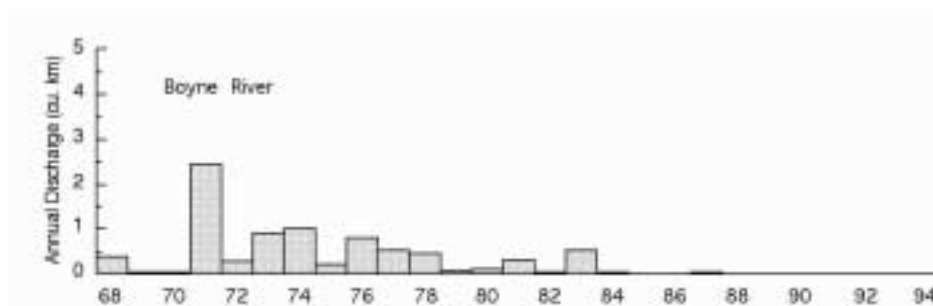


Figure 27. Water discharge patterns in the Boyne River.