

Plane Creek Catchment

Catchment Information

Description

Area (km ²)	2539
% Gauged	19
Mean Discharge Yr (km ³)	1.5
Rainfall (mm)	1125
Runoff (mm/m ²)	587
Runoff/Rainfall Ratio	52

Land Use

Population	6911
Clearing (km ²)	822
% Cleared	32
Area under Grazing (km ²)	1830
Area under Sugar (km ²)	549
Area under Horticulture (km ²)	<1

Pesticide Application

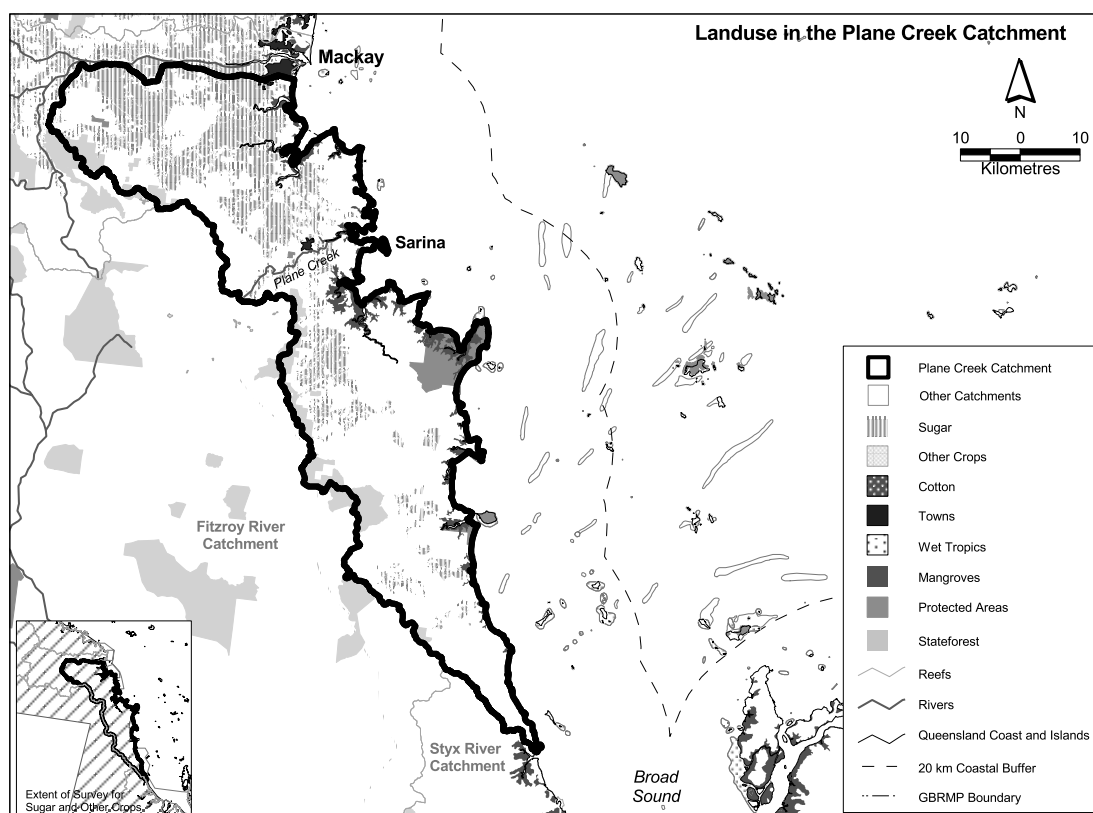
(Kg Active Ingredient/Yr)

Atrazine	55948
Diuron	52079
2-4D	19438
Chlorpyrifos	10816
MEMC	176

Catchment Targets

	1850 T/yr	Current T/yr	Current T/ km ³	ratio	2011 % Red'n	2011 T/yr Target	2011 T/ km ³ Target
Sediment Export	2000	114860	77181	57.4	50	57430	38591
Total N Export	363	1612	1082	4.4	50	806	541
Total P Export	18	353	237	19.6	50	177	119

Data Confidence Index = 1



Plane Creek Catchment

The Plane Creek catchment covers an area of 2539 km². Grazing occupies most of the catchment area with 1830 km². Sugarcane is the other dominant land use, occupying approximately 549km². State forests and timber reserves occupy 136 km² and protected areas cover 79 km². Sediment, total nitrogen export and total phosphorus export are classified as high risk in the Plane Creek Catchment.

Issues in the catchment:

- Grazing in drier lands show signs of overgrazing and inappropriate land-clearing practices which has led to weed problems and sheet and gully erosion in some areas.
- Approximately 32% of the catchment has been cleared mostly for sugarcane.
- Only 3% of the catchment is within protected areas.
- Poned pasture development may impact riverine and wetland habitats.
- Very high contribution of nutrient (particularly nitrogen) and pesticides.
- Highly modified flood plain.
- Fauna in the catchment has been affected by changes in land use.
- Close proximity to inshore reefal areas.
- Proximity to seagrass beds and dugong protection areas.
- Commercial port.
- Commercial and recreational fishery.
- Recreational marine use.

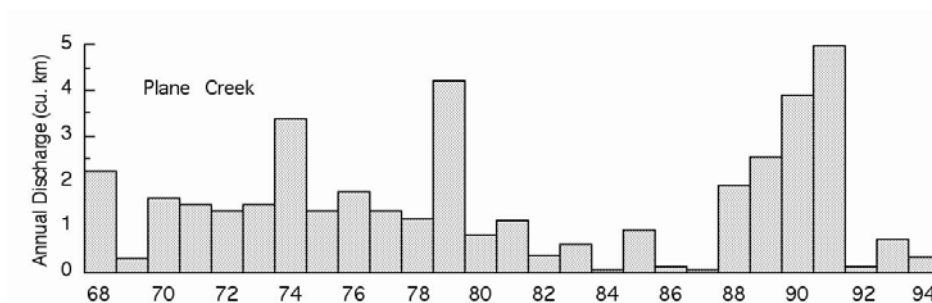


Figure 24. Water discharge patterns in the Plane Creek