

Endeavour River Catchment

Catchment Information

Description

Area (km ²)	2104
% Gauged	28
Mean Discharge Yr (km ³)	1.8
Rainfall (mm)	1939
Runoff (mm/m ²)	865
Runoff/Rainfall Ratio	45

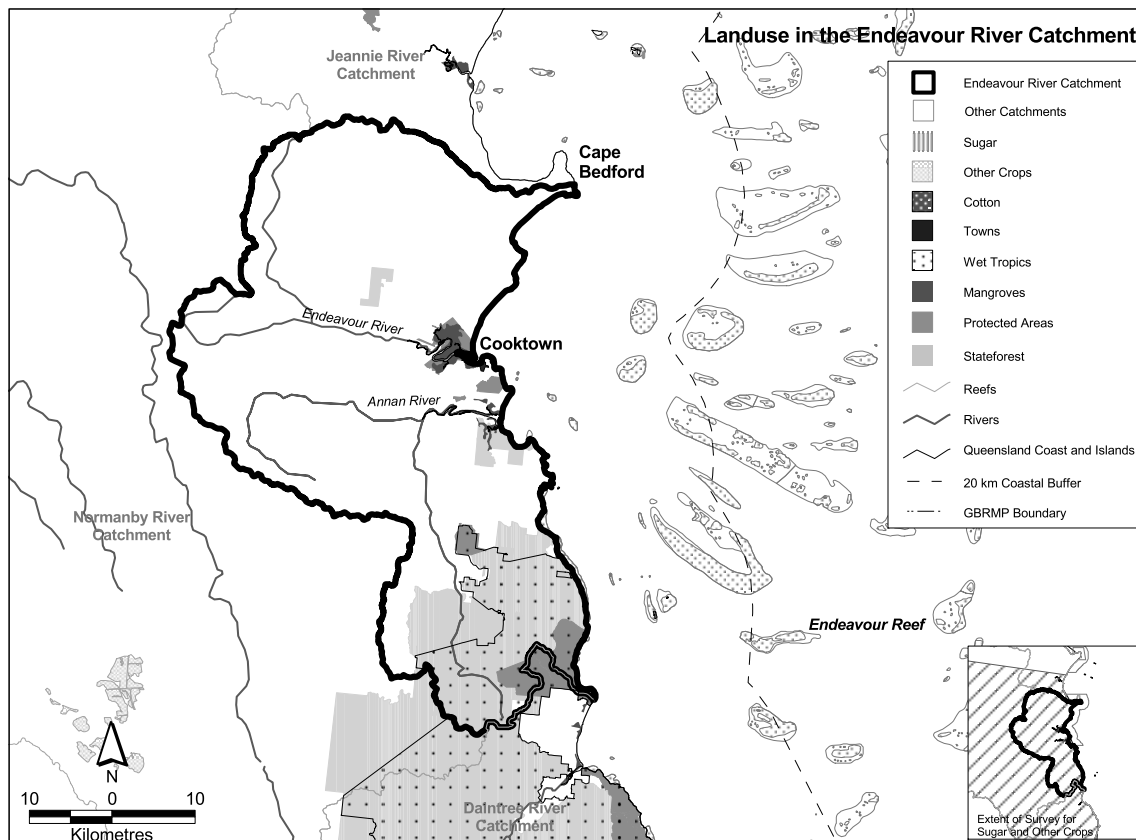
Land Use

Population	1344
Clearing (km ²)	0
% Cleared	0
Area under Grazing (km ²)	1768
Area under Sugar (km ²)	N/A
Area under Horticulture (km ²)	N/A

Catchment Targets

	1850 T/yr	Current T/yr	Current T/ km ³	ratio	2011 % Red'n	2011 T/yr Target	2011 T/ km ³ Target
Sediment Export	97000	486871	267582	5	0	486871	267582
Total N Export	245	721	396	2.9	33	483	265
Total P Export	12	76	42	6.3	33	51	28

Data Confidence Index = 1



Endeavour River Catchment

The Endeavour River catchment covers an area of 2104 km². Grazing occupies 1768 km². State forests and timber reserves occupy 330 km² and protected areas cover 300 km², including 264 km² in the Wet Tropics World Heritage Area. Sediment export is classified as low risk, and total nitrogen and total phosphorus exports are classified as medium risk in the Endeavour River catchment.

Issues in the catchment

- There are potential growth areas around Cooktown and the Endeavour River for cultivation, tourism and small hobby farm acreage.
- Some fauna species are threatened in the catchment.
- Limited clearing to date.
- Only 14% of the catchment is within protected areas.
- Significant inshore reefal areas.
- Commercial fishery.

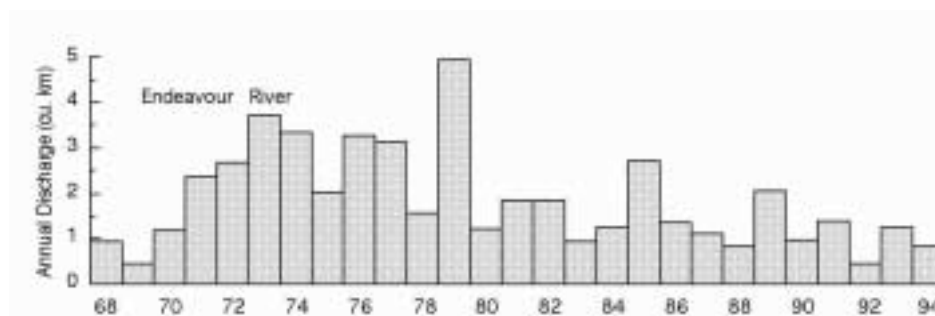


Figure 7. Water discharge patterns in the Endeavour River