

Baffle Creek Catchment

Catchment Information

Description

Area (km ²)	3996
% Gauged	37
Mean Discharge Yr (km ³)	0.8
Rainfall (mm)	893
Runoff (mm/m ²)	195
Runoff/Rainfall Ratio	22

Land Use

Population	447
Clearing (km ²)	3184
% Cleared	80
Area under Grazing (km ²)	3495
Area under Sugar (km ²)	14
Area under Horticulture (km ²)	7.9

Pesticide Application

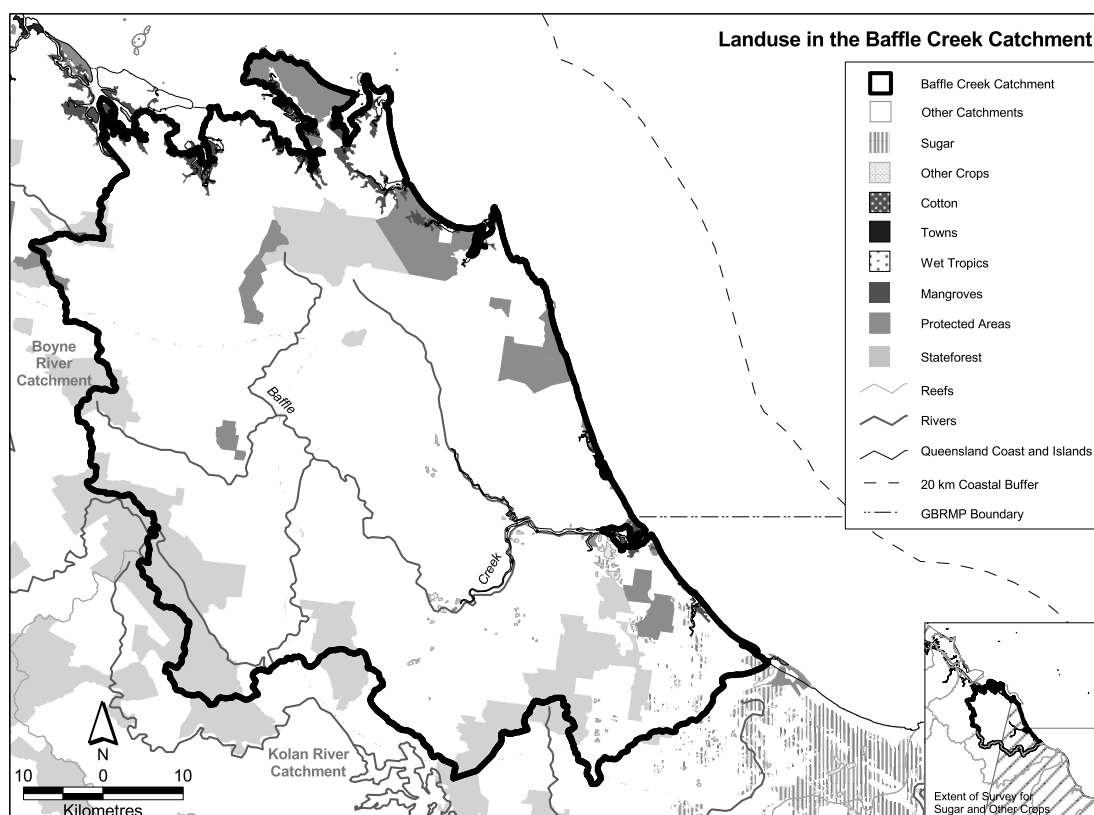
(Kg Active Ingredient/Yr)

Atrazine	523
Diuron	234
2-4D	66
Chlorpyrifos	356
MEMC	24

Catchment Targets

	1850 T/yr	Current T/yr	Current T/ km ³	ratio	2011 % Red'n	2011 T/yr Target	2011 T/ km ³ Target
Sediment Export	3000	103376	132051	34.5	50	51688	66026
Total N Export	190	874	1082	4.4	33	565	725
Total P Export	10	185	237	18.5	33	123	159

Data confidence Index = 1



Baffle Creek Catchment

The Baffle Creek catchment covers an area of 3996 km². Grazing is the dominant land use occupying approximately 3495 km². Other land uses include 14 km² of sugarcane and approximately 8 km² of horticulture. State forest and timber reserves occupy 477 km² and protected areas cover 214 km². Sediment export is classified as high risk, whilst total nitrogen and total phosphorus export are classified as medium risk in the Baffle Creek Catchment.

Issues in the catchment:

- Grazing land has been cleared on slopes and marginal areas which has resulted in erosion and salinity problems.
- Approximately 80% of the catchment has been cleared mostly for grazing.
- Approximately 5% of the catchment is within protected areas.
- Medium nutrient and pesticide contribution.
- Species are endangered due to land use and changes in vegetation cover.

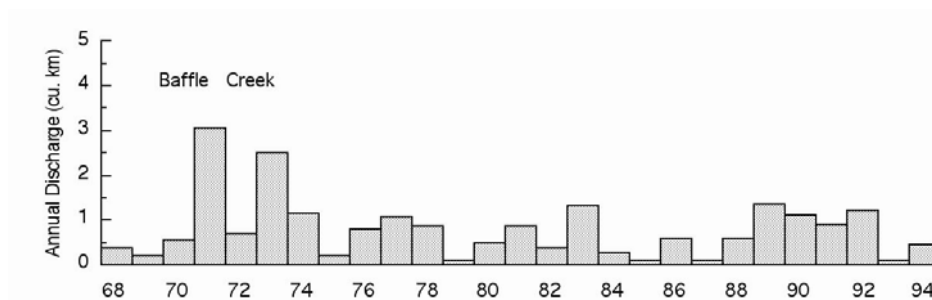


Figure 28. Water discharge patterns in the Baffle Creek.