

Normanby River Catchment

Catchment Information

Description

Area (km ²)	24408
% Gauged	33
Mean Discharge Yr (km ³)	4.9
Rainfall (mm)	1185
Runoff (mm/m ²)	203
Runoff/Rainfall Ratio	17

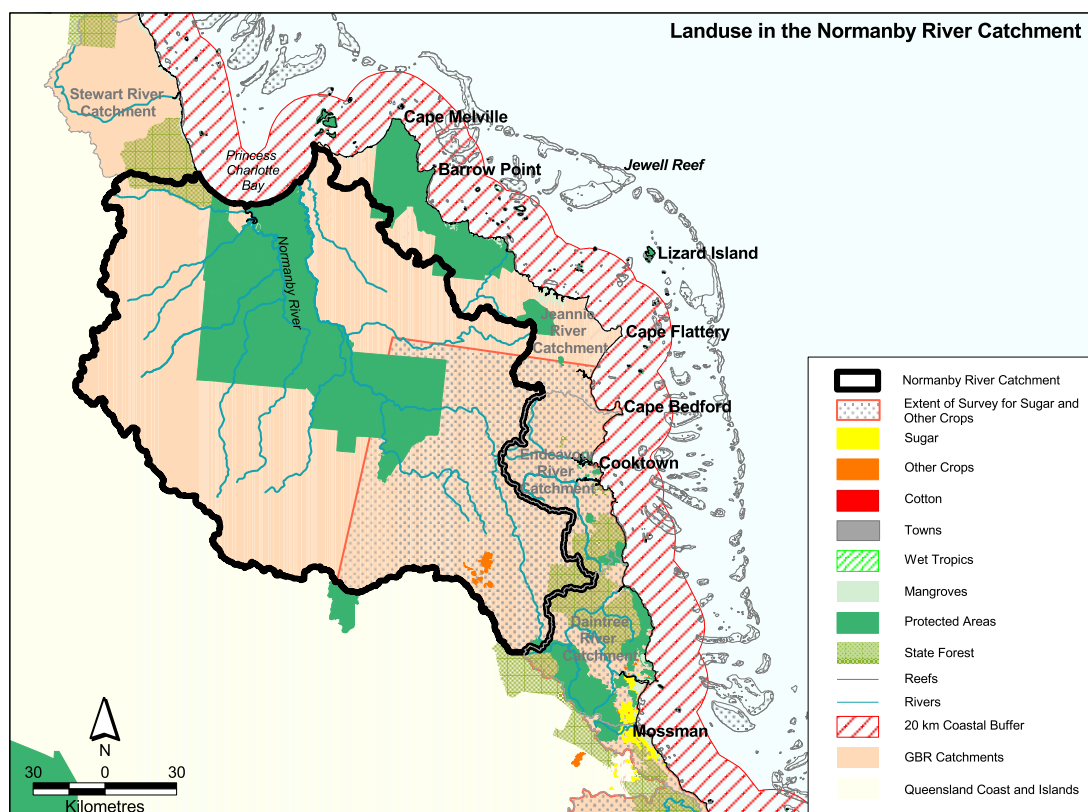
Land Use

Population	N/A
Clearing (km ²)	140
% Cleared	1
Area under Grazing (km ²)	18495
Area under Sugar (km ²)	N/A
Area under Horticulture (km ²)	35

Catchment Targets

	1850 T/yr	Current T/yr	Current T/ km ³	ratio	2011 % Red'n	2011 T/yr Target	2011 T/ km ³ Target
Sediment Export	540000	1620279	327273	3	0	1620279	327273
Total N Export	12064	1960	396	1	0	1960	396
Total P Export	60	208	42	3.5	0	208	42

Data Confidence Index = 2



Normanby River Catchment

The Normanby River catchment covers an area of 24408 km². The catchment is one of the few relatively undisturbed areas of the Great Barrier Reef Catchment Area. Grazing is the dominant land use approximately 18495 km² and is characterised by low stocking rates associated with open-range grazing. Other land uses include 35 km² of horticulture. State forests and timber reserves occupy 407 km² and protected areas cover 5470 km². Sediment, total nitrogen and total phosphorus exports are classified as low risk in the Normanby River Catchment.

Issues in the catchment:

- Soils are prone to erosion when cleared. More fertile soils are suitable for cropping areas.
- Potential effects of mining and exploration activities on water quality, erosion and siltation will continue to be an important concern.
- Some fauna species are threatened in the catchment.
- Grazing is conducted in the majority of the catchment.
- Limited land clearing to date.
- 22% of the catchment is within protected areas
- Significant inshore reefal areas.
- Commercial fishery.

Water sampling was conducted by AIMS in the Normanby River during the 1999 and 2000 wet seasons. An AIMS river logger has been deployed in the Normanby River for two years.

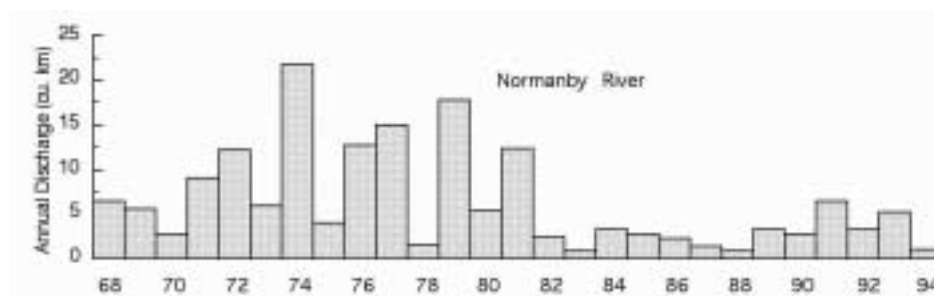


Figure 6. Water discharge patterns in the Normanby River.