

# Endeavour River Catchment

## Catchment Information

### Description

Area (km <sup>2</sup> )	2104
% Gauged	28
Mean Discharge Yr (km <sup>3</sup> )	1.8
Rainfall (mm)	1939
Runoff (mm/m <sup>2</sup> )	865
Runoff/Rainfall Ratio	45

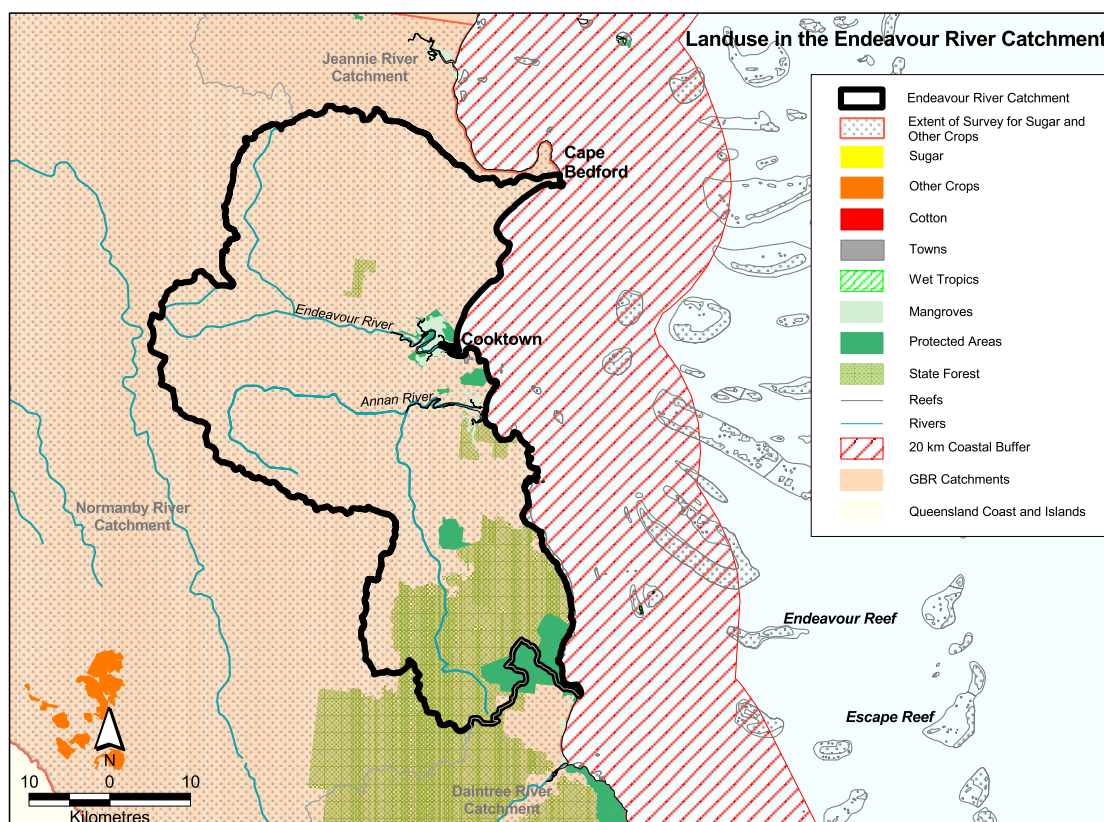
### Land Use

Population	1344
Clearing (km <sup>2</sup> )	0
% Cleared	0
Area under Grazing (km <sup>2</sup> )	1768
Area under Sugar (km <sup>2</sup> )	N/A
Area under Horticulture (km <sup>2</sup> )	N/A

## Catchment Targets

	1850 T/yr	Current T/yr	Current T/ km <sup>3</sup>	ratio	2011 % Red'n	2011 T/yr Target	2011 T/ km <sup>3</sup> Target
Sediment Export	97000	486871	267582	5	0	486871	267582
Total N Export	245	721	396	2.9	33	483	265
Total P Export	12	76	42	6.3	33	51	28

Data Confidence Index = 1



## Endeavour River Catchment

The Endeavour River catchment covers an area of 2104 km<sup>2</sup>. Grazing occupies 1768 km<sup>2</sup>. State forests and timber reserves occupy 330 km<sup>2</sup> and protected areas cover 300 km<sup>2</sup>, including 264 km<sup>2</sup> in the Wet Tropics World Heritage Area. Sediment export is classified as low risk, and total nitrogen and total phosphorus exports are classified as medium risk in the Endeavour River catchment.

### *Issues in the catchment*

- There are potential growth areas around Cooktown and the Endeavour River for cultivation, tourism and small hobby farm acreage.
- Some fauna species are threatened in the catchment.
- Limited clearing to date.
- Only 14% of the catchment is within protected areas.
- Significant inshore reefal areas.
- Commercial fishery.

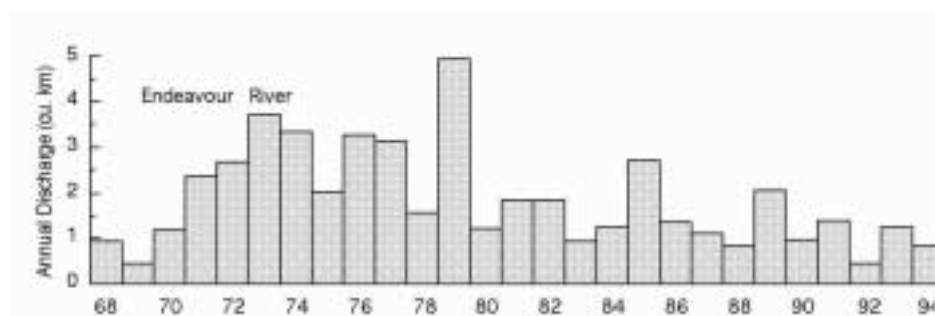


Figure 7. Water discharge patterns in the Endeavour River