

# Styx River Catchment

## Catchment Information

### Description

|                                      |      |
|--------------------------------------|------|
| Area (km <sup>2</sup> )              | 3012 |
| % Gauged                             | 0    |
| Mean Discharge Yr (km <sup>3</sup> ) | N/A  |
| Rainfall (mm)                        | 1010 |
| Runoff (mm/m <sup>2</sup> )          | N/A  |
| Runoff/Rainfall Ratio                | N/A  |

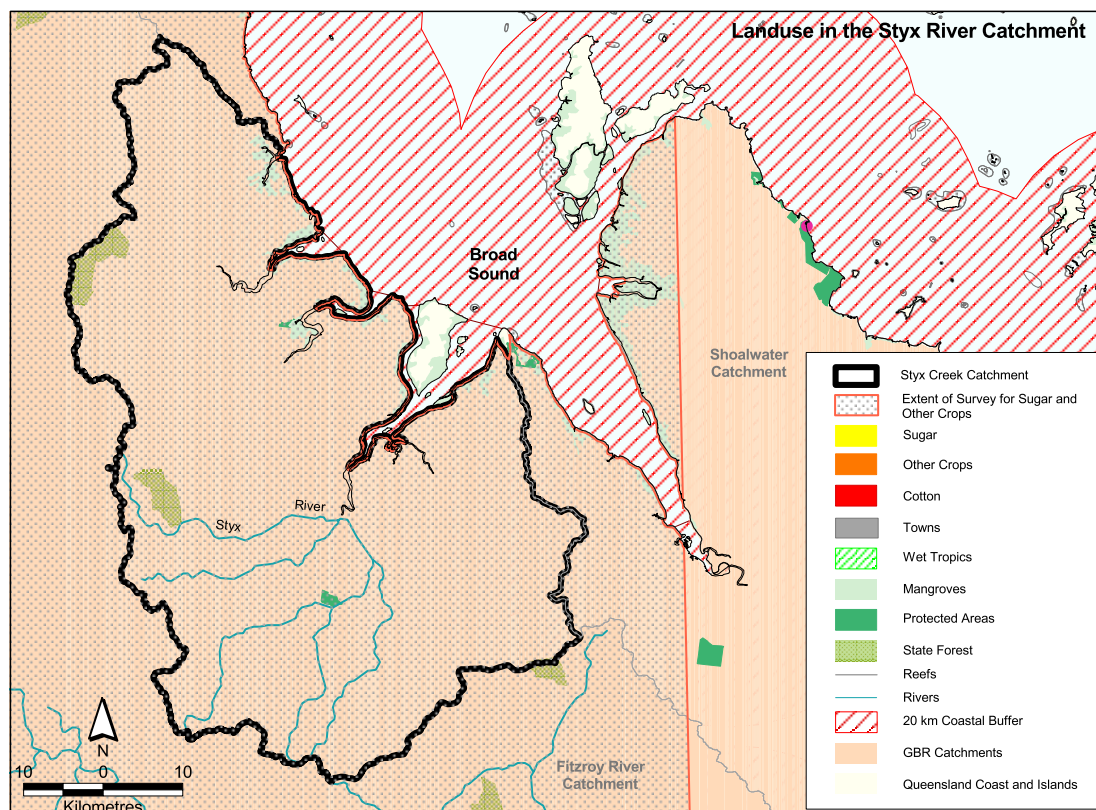
### Land Use

|  |      |
|--|------|
| Population                                 | N/A  |
| Clearing (km <sup>2</sup> )                | 1223 |
| % Cleared                                  | 41   |
| Area under Grazing (km <sup>2</sup> )      | 2961 |
| Area under Sugar (km <sup>2</sup> )        | N/A  |
| Area under Horticulture (km <sup>2</sup> ) | N/A  |

## Catchment Targets

|                 | 1850<br>T/Yr | Current<br>T/Yr | Current/1850 | Current<br>T/km3 | 2011 %<br>Reduction | 2011 T/Yr<br>Target |
|-----------------|--------------|-----------------|--------------|------------------|---------------------|---------------------|
| Sediment Export | 4000         | 136000          | 34           | **               | 50                  | 68000               |
| Total N Export  | 145          | 642             | 4            | **               | 33                  | **                  |
| Total P Export  | 7.2          | 140             | 19           | **               | 33                  | **                  |

\*\*Data for the above table is shown in Tonnes per Year (T/Yr) as there is insufficient data to calculate estimates based on river discharge for this catchment.  
Data Confidence Index = 1



## *Styx River Catchment*

The Styx River catchment covers an area of 3012 km<sup>2</sup>. Grazing is the dominant land use occupying approximately 2961 km<sup>2</sup>. State forest and timber reserves occupy 51 km<sup>2</sup> and protected areas cover <5 km<sup>2</sup>. Data is not available for other land uses in the catchment. Sediment export is classified as high risk, whilst total nitrogen and total phosphorus exports are classified as medium risk in the Styx River catchment.

### *Issues in the catchment:*

- Grazing in drier lands show signs of overgrazing and inappropriate land-clearing practices which has led to weed problems and sheet and gully erosion in some areas.
  - Approximately 41% of the Catchment is cleared mostly for grazing.
  - Less than 0.2% of the catchment is within protected areas.
  - Poned pasture development may impact riverine and wetland habitats.
  - Floodplains have been modified.
  - Fauna in the catchment has been affected by changes in land use.
  - Commercial and recreational fishery.
  - Recreational marine use.
- \* limited data available on cropping area and nutrient and pesticide use.

No flow data is available for the Styx River catchment.