

# Don River Catchment

## Catchment Information

### Description

Area (km <sup>2</sup> )	3695
% Gauged	16
Mean Discharge Yr (km <sup>3</sup> )	0.75
Rainfall (mm)	1045
Runoff (mm/m <sup>2</sup> )	203
Runoff/Rainfall Ratio	19

### Land Use

Population	237
Clearing (km <sup>2</sup> )	3395
% Cleared	92
Area under Grazing (km <sup>2</sup> )	3582
Area under Sugar (km <sup>2</sup> )	47
Area under Horticulture (km <sup>2</sup> )	63

### Pesticide Application

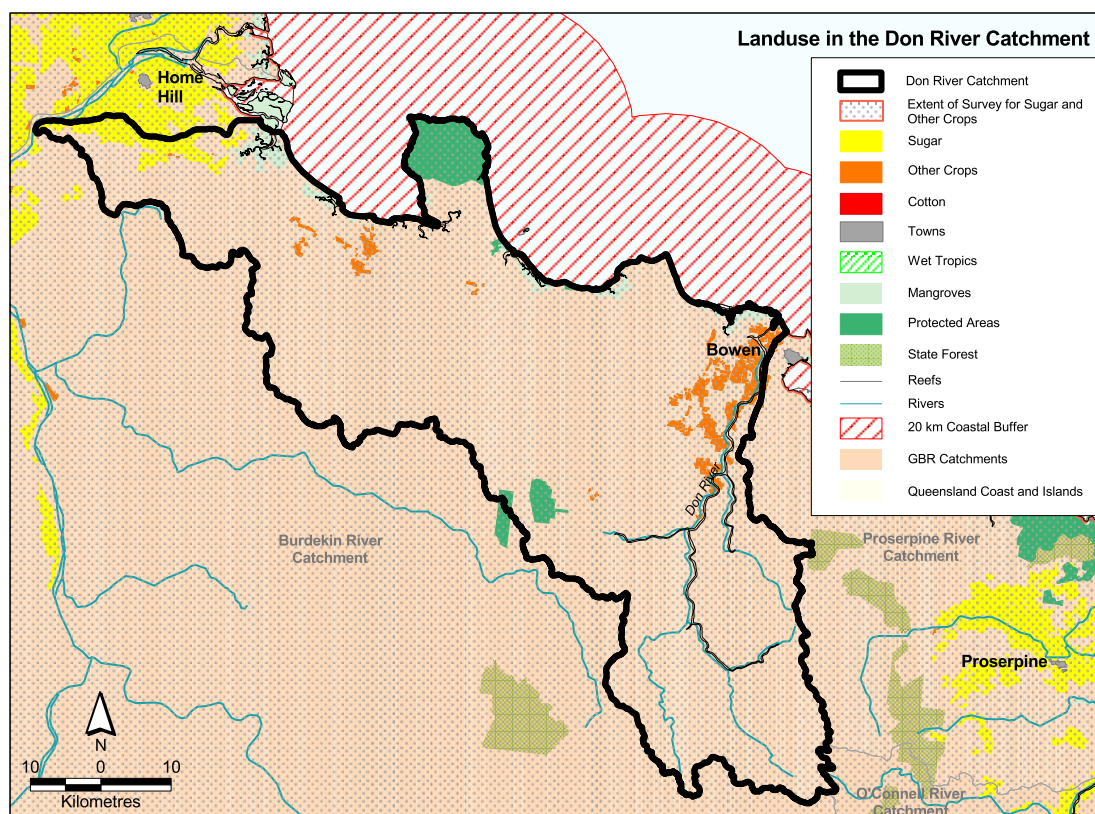
(Kg Active Ingredient/Yr)

Atrazine	2881
Diuron	489
2-4D	816
Chlorpyrifos	45
MEMC	29

## Catchment Targets

	1850 T/yr	Current T/yr	Current T/ km <sup>3</sup>	ratio	2011 % Red'n	2011 T/yr Target	2011 T/ km <sup>3</sup> Target
Sediment Export	46000	509528	680000	11.1	33	341384	455600
Total N Export	183	812	1082	4.4	33	544	725
Total P Export	9	178	237	19.8	50	89	119

Data Confidence Index = 1



## *Don River Catchment*

The Don River catchment covers an area of 3695 km<sup>2</sup>. Grazing is the dominant land use occupying 3582 km<sup>2</sup>. Other land uses include 47 km<sup>2</sup> of sugarcane and 63 km<sup>2</sup> of horticulture. Protected areas cover 100 km<sup>2</sup>, and state forests and timber reserves occupy less than 1 km<sup>2</sup>. Sediment and total nitrogen exports are classified as medium risk, and total phosphorus export is classified as high risk in the Don River catchment.

### *Issues in the catchment:*

- Soil erosion on the river delta and flats is significant which is caused predominantly from growing horticultural crops.
- Intensive agriculture and extensive use of chemicals have potential to cause contamination of soils and water.
- Intensive groundwater use.
- Grazing lands have isolated severe gully erosion in cleared areas.
- Major stream modifications have occurred in the catchment.
- Approximately 92% of the catchment has been cleared.
- Only 3% of the catchment is within protected areas.
- Proximity to seagrass beds and dugong protection areas
- Commercial and recreational fishery.
- Recreational marine use.
- Commercial port.

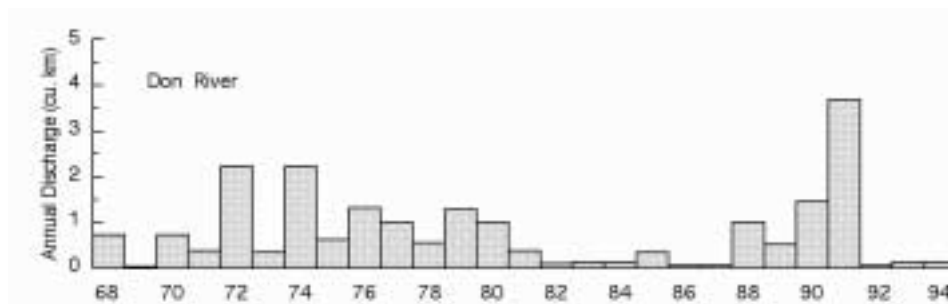


Figure 20. Water discharge patterns in the Don River.