

Calliope River Catchment

Catchment Information

Description

Area (km²)	2236
% Gauged	58
Mean Discharge Yr (km³)	0.3
Rainfall (mm)	790
Runoff (mm/m²)	134
Runoff/Rainfall Ratio	17

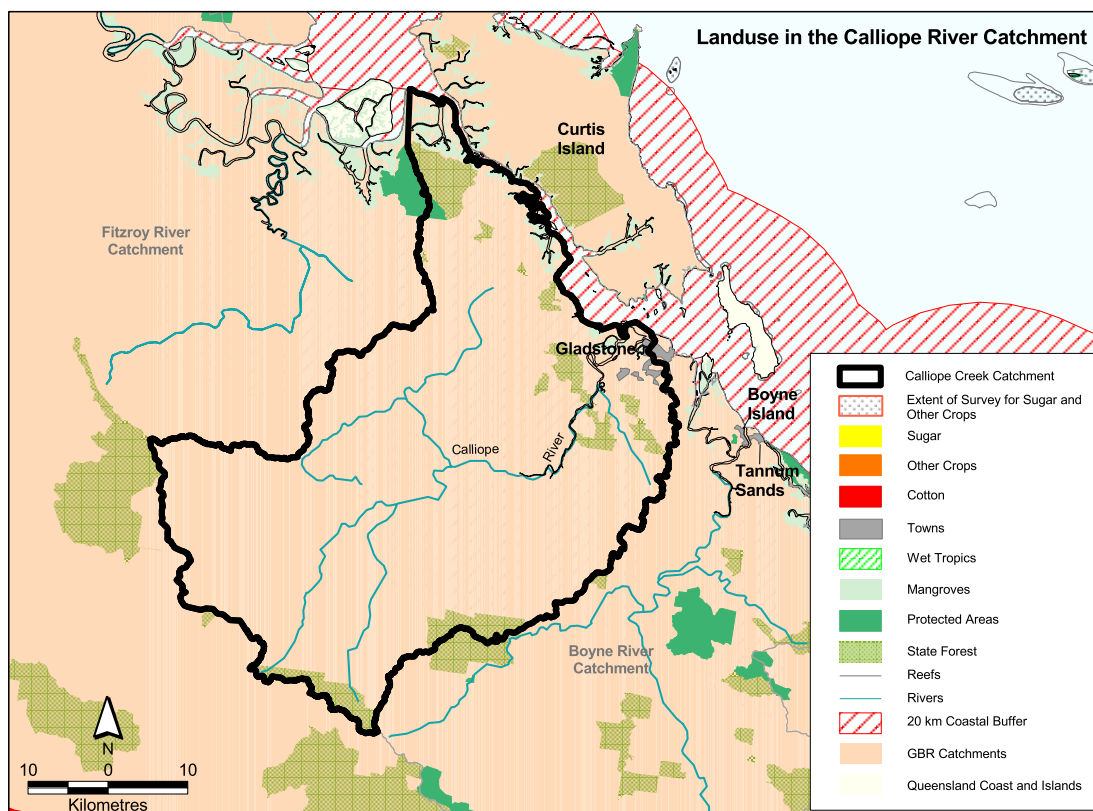
Land Use

Population	24387
Clearing (km²)	1865
% Cleared	83
Area under Grazing (km²)	2032
Area under Sugar (km²)	N/A
Area under Horticulture (km²)	N/A

Catchment Targets

	1850 T/yr	Current T/yr	Current T/ km ³	ratio	2011 % Red'n	2011 T/yr Target	2011 T/ km ³ Target
Sediment Export	2000	60772	203333	30.4	50	30386	101667
Total N Export	73	235	1082	4.5	33	218	725
Total P Export	4	71	237	17.8	33	47	159

Data Confidence Index = 1



Calliope River Catchment

The Calliope River catchment covers an area of 2236 km². Grazing is the dominant land use occupying approximately 2032 km². State forest and timber reserves occupy 162 km² and protected areas cover <10 km². Data is not available for other land uses in the catchment. Sediment export is classified as high risk, whilst total nitrogen and total phosphorus export are classified as medium risk in the Calliope River Catchment.

Issues in the catchment:

- Grazing land has been cleared on slopes and marginal areas which has resulted in erosion and salinity problems.
- Approximately 83% of the catchment has been cleared, mostly for grazing.
- Heavy industrial development in the catchment.
- Significant mining interests in the catchment.
- Species are endangered due to land use and changes in vegetation cover.
- Less than 0.3% of the catchment is within protected areas.
- Proximity to seagrass beds and dugong protection areas.
- Commercial and recreational fishery.
- Marine tourism.
- Commercial port.

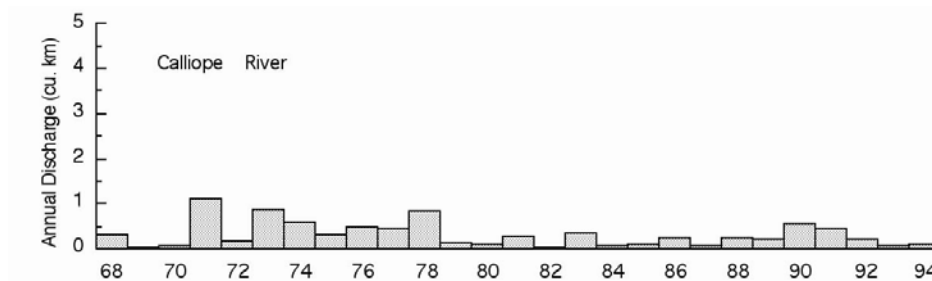


Figure 26. Water discharge patterns in the Calliope River.