

# Calliope River Catchment

## Catchment Information

### Description

<b>Area (km<sup>2</sup>)</b>	2236
<b>% Gauged</b>	58
<b>Mean Discharge Yr (km<sup>3</sup>)</b>	0.3
<b>Rainfall (mm)</b>	790
<b>Runoff (mm/m<sup>2</sup>)</b>	134
<b>Runoff/Rainfall Ratio</b>	17

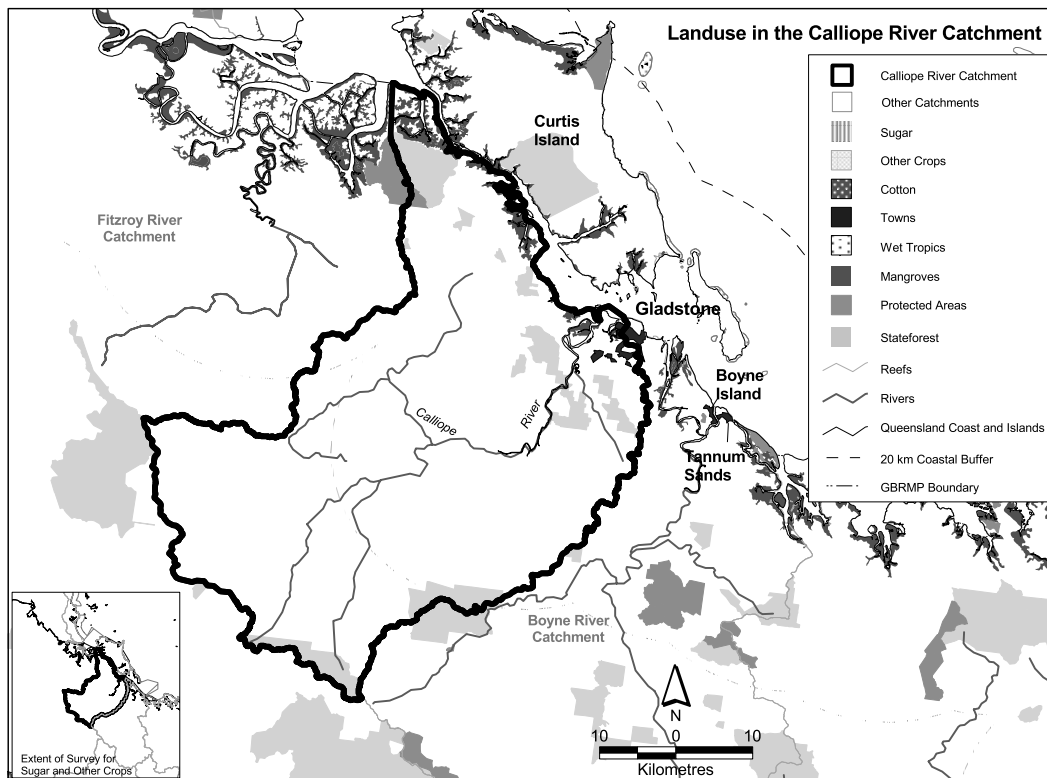
### Land Use

<b>Population</b>	24387
<b>Clearing (km<sup>2</sup>)</b>	1865
<b>% Cleared</b>	83
<b>Area under Grazing (km<sup>2</sup>)</b>	2032
<b>Area under Sugar (km<sup>2</sup>)</b>	N/A
<b>Area under Horticulture (km<sup>2</sup>)</b>	N/A

## Catchment Targets

	<b>1850 T/yr</b>	<b>Current T/yr</b>	<b>Current T/ km<sup>3</sup></b>	<b>ratio</b>	<b>2011 % Red'n</b>	<b>2011 T/yr Target</b>	<b>2011 T/ km<sup>3</sup> Target</b>
<b>Sediment Export</b>	2000	60772	203333	30.4	50	30386	101667
<b>Total N Export</b>	73	235	1082	4.5	33	218	725
<b>Total P Export</b>	4	71	237	17.8	33	47	159

Data Confidence Index = 1



## Calliope River Catchment

The Calliope River catchment covers an area of 2236 km<sup>2</sup>. Grazing is the dominant land use occupying approximately 2032 km<sup>2</sup>. State forest and timber reserves occupy 162 km<sup>2</sup> and protected areas cover <10 km<sup>2</sup>. Data is not available for other land uses in the catchment. Sediment export is classified as high risk, whilst total nitrogen and total phosphorus export are classified as medium risk in the Calliope River Catchment.

### *Issues in the catchment:*

- Grazing land has been cleared on slopes and marginal areas which has resulted in erosion and salinity problems.
- Approximately 83% of the catchment has been cleared, mostly for grazing.
- Heavy industrial development in the catchment.
- Significant mining interests in the catchment.
- Species are endangered due to land use and changes in vegetation cover.
- Less than 0.3% of the catchment is within protected areas.
- Proximity to seagrass beds and dugong protection areas.
- Commercial and recreational fishery.
- Marine tourism.
- Commercial port.

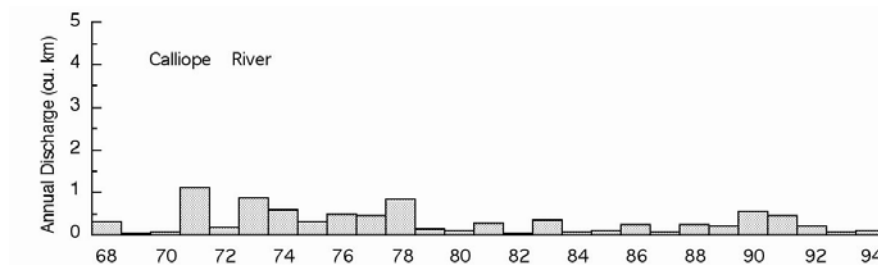


Figure 26. Water discharge patterns in the Calliope River.