

# Ross River Catchment

## Catchment Information

### Description

Area (km <sup>2</sup> )	1707
% Gauged	56
Mean Discharge Yr (km <sup>3</sup> )	0.5
Rainfall (mm)	1027
Runoff (mm/m <sup>2</sup> )	287
Runoff/Rainfall Ratio	28

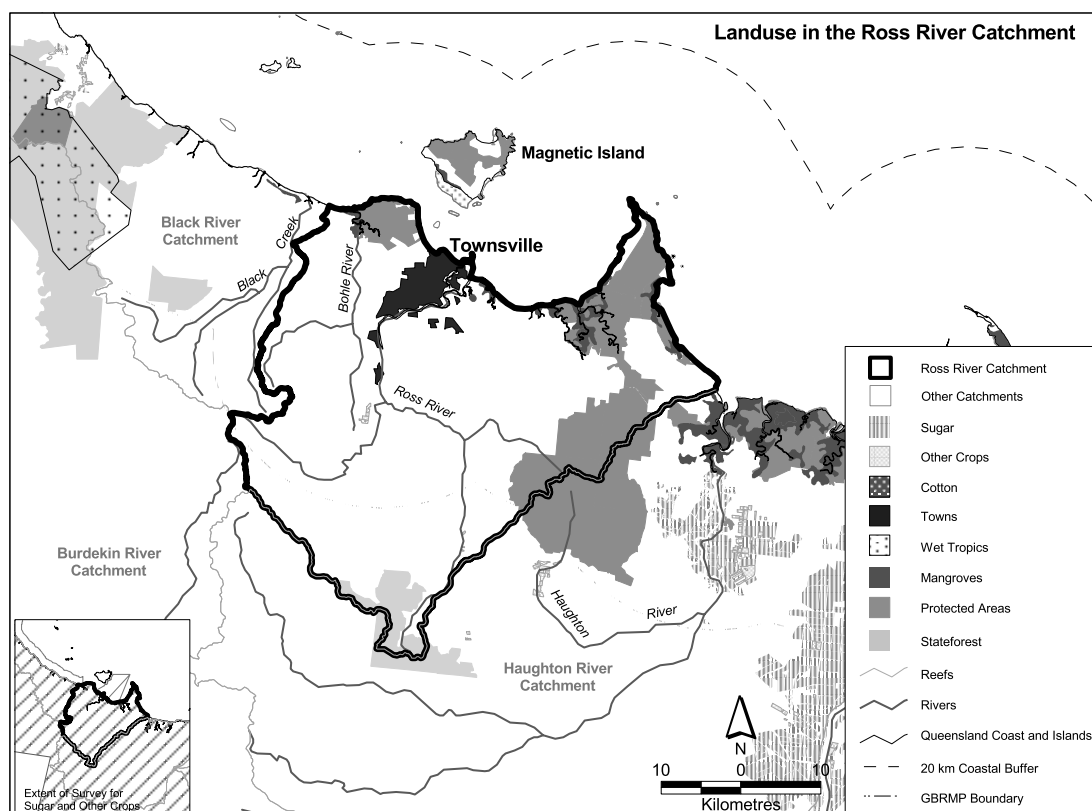
### Land Use

Population	106445
Clearing (km <sup>2</sup> )	1229
% Cleared	72
Area under Grazing (km <sup>2</sup> )	1481
Area under Sugar (km <sup>2</sup> )	<10
Area under Horticulture (km <sup>2</sup> )	<10

## Catchment Targets

	1850 T/yr	Current T/yr	Current T/ km <sup>3</sup>	ratio	2011 % Red'n	2011 T/yr Target	2011 T/ km <sup>3</sup> Target
<b>Sediment Export</b>	29000	58383	118367	2	0	58383	118367
<b>Total N Export</b>	119	530	1082	4.5	33	355	725
<b>Total P Export</b>	6	116	237	19.3	33	78	159

Data Confidence Index = 2



## Ross River Catchment

The Ross River catchment covers an area of 1707 km<sup>2</sup>. Grazing is the dominant land use occupying 1481 km<sup>2</sup>. State forests and timber reserves occupy 48 km<sup>2</sup> and protected areas cover 245 km<sup>2</sup>. Other land uses at a much smaller scale include horticulture and sugarcane (both less than 10 km<sup>2</sup>). Sediment export is classified as low risk, whilst total nitrogen and total phosphorus exports are classified as medium risk in the Ross River catchment.

### *Issues in the catchment:*

- Grazing lands are in reasonably good condition with only minor gully and sheet erosion.
- Most native grasses are still present.
- The Ross River Dam is a major source of the Townsville water supply.
- The catchment contains the heavily urbanised City of Townsville and its small surrounds and small areas of sugarcane where suitable soils permit.
- Significant alteration of the river has occurred through extractions of sand and gravel to supply construction sites in Townsville and for water storage.
- Presence of heavy industry.
- Significant area of the catchment has been cleared for grazing.
- Approximately 14% of the catchment is within protected areas.
- Some fauna species have been subjected to pressure in the catchment.
- Commercial and recreational fishery.
- Marine tourism.
- Commercial port.
- Close proximity to seagrass and dugong protection areas.

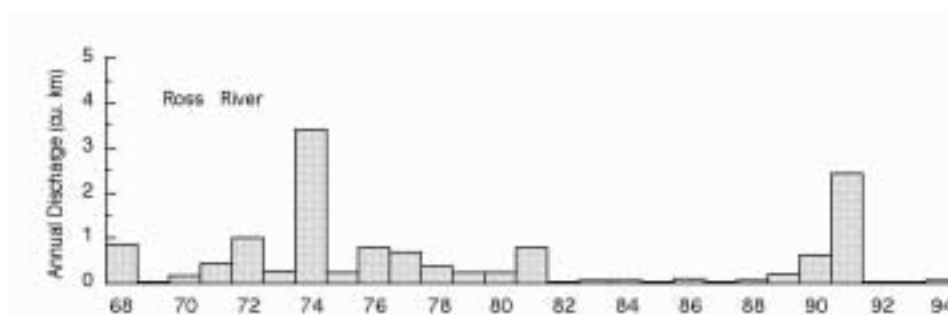


Figure 17. Water discharge patterns in the Ross River.