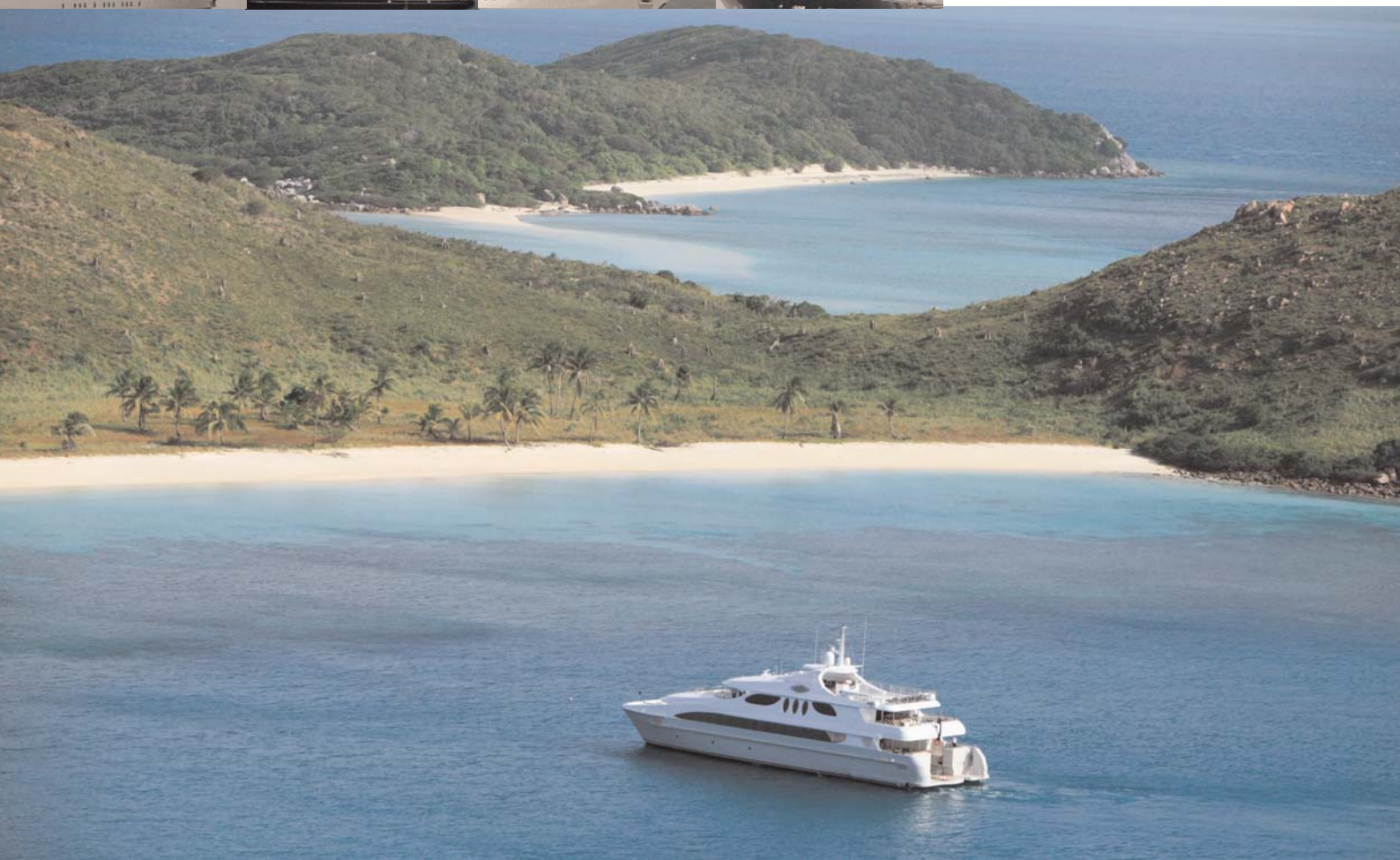




Australian Government

Great Barrier Reef
Marine Park Authority

A statement of **Management Arrangements** in the **Great Barrier Reef Marine Park** for **Super-yacht Operations**



Prepared by the Great Barrier Reef Marine Park Authority
May 2011



A statement of **Management Arrangements** in the **Great Barrier Reef Marine Park** for **Super-yacht Operations**



Prepared by the
Great Barrier Reef Marine Park Authority
May 2011



Australian Government

**Great Barrier Reef
Marine Park Authority**

© Commonwealth of Australia 2011

First published by the Great Barrier Reef Marine Park Authority (GBRMPA) September 2010.
Reprinted with amendments May 2011.

ISBN 978 1 921682 27 8 (pdf)

This work is copyright. Apart from any use as permitted under the *Copyright Act 1968*, no part may be reproduced by any process without the prior written permission of the Great Barrier Reef Marine Park Authority.

National Library of Australia Cataloguing-in-Publication entry

A statement of management arrangements in the Great Barrier Reef Marine Park for super-yacht operations [electronic resource] / Great Barrier Reef Marine Park Authority.

ISBN 978 1 921682 27 8 (pdf)

Yachting--Queensland--Great Barrier Reef.
Marine parks and reserves--Queensland--Great Barrier Reef--Management.
Great Barrier Reef Marine Park (Qld.)--Management.
Great Barrier Reef (Qld.)--Recreational use.

Great Barrier Reef Marine Park Authority.

353.7809943

DISCLAIMER

The views and opinions expressed in this publication are those of the authors and do not necessarily reflect those of the Australian Government. While reasonable effort has been made to ensure that the contents of this publication are factually correct, the Commonwealth does not accept responsibility for the accuracy or completeness of the contents, and shall not be liable for any loss or damage that may be occasioned directly or indirectly through the use of, or reliance on, the contents of this publication.

Cover images: *Seafaris* at Lizard Island courtesy of the McCloy Group, top strip courtesy of Carter Marine Agencies Pty Ltd., bottom strip GBRMPA.

Requests and inquiries concerning reproduction and rights should be addressed to:



Australian Government

Great Barrier Reef Marine Park Authority

Director, Communication and Knowledge Management Group
2-68 Flinders Street
PO Box 1379
TOWNSVILLE QLD 4810
Australia
Phone: (07) 4750 0700
Fax: (07) 4772 6093
info@gbbrmpa.gov.au

Comments and inquiries on this document are welcome and should be addressed to:

Director, Tourism and Recreation
tourrec@gbbrmpa.gov.au

www.gbbrmpa.gov.au

Contents

Purpose	2
Introduction	2
Commercial or recreational status of visit	3
Vessel length	3
Group size	3
A quick guide to access information	4
Appendices	
Commercial operations	
1. Super-yachts less than or equal to 35 metres	5
2. Super-yachts between 35 and 70 metres	8
3. Super-yachts greater than 70 metres	13
Recreational operations	
4. Super-yachts less than or equal to 35 metres	18
5. Super-yachts between 35 and 70 metres	21
6. Super-yachts greater than 70 metres	24

Purpose

The purpose of this statement is to assist super-yachts to operate in the Great Barrier Reef Marine Park (the Marine Park). It summarises the current management arrangements and explains where super-yachts can go.¹

The *Queensland Superyacht Strategy 2008-2013* defines a super-yacht as "a high value luxury vessel of 24 metres or more in length, both power and sail".

Introduction

The Great Barrier Reef is the largest and best known coral reef ecosystem in the world, spanning a length of 2300km along two-thirds of the east coast of Queensland.

Areas of the Great Barrier Reef Region have been progressively protected as part of the Commonwealth Great Barrier Reef Marine Park since the late 1970s and it was inscribed on the World Heritage List in 1981.

In recognition of the environmental and cultural significance of the Great Barrier Reef, the International Maritime Organisation designated it the world's first Particularly Sensitive Sea Area in 1990. This designation allows the Great Barrier Reef Marine Park Authority and the Australian Maritime Safety Authority to apply specific measures to control maritime activities within the area such as routing measures, strict application of MARPOL discharge and vessel tracking and reporting.

Due in part to the smooth, sheltered waters of the Great Barrier Reef, Queensland boasts the largest share of super-yacht visits of any Australian state. The Great Barrier Reef Marine Park is a multiple use protected area and super-yachts are a welcome and legitimate use of the Marine Park

Super-yacht access to the Marine Park will be affected by whether the operation is commercial or recreational, the vessel length and the number of people onboard.

Access to the reef anchorages and setting areas in some of the most popular areas in the Marine Park such as the offshore Cairns, Port Douglas, Whitsundays and

¹ This statement is intended to be a practical guide to Marine Park requirements for super-yacht skippers, agents and those providing advice on access to the Marine Park. It is not intended to be a guide to other government agencies' requirements, such as Maritime Safety Queensland or the Department of Environment and Resource Management working through the Queensland Parks and Wildlife Service. Please note this is a summary of legislation and policy and for full information the following documents should be read:

- *Great Barrier Reef Marine Park Zoning Plan 2003*
- *Great Barrier Reef Marine Park Regulations 1983*
- Cairns Area Plan of Management
- Hinchinbrook Plan of Management
- Whitsundays Plan of Management

Hinchinbrook Plan of Management Areas, applies equally to recreational and commercial super-yachts.

Commercial or recreational status of the visit

The operation of a super-yacht is commercial if it involves providing transport, accommodation or services for tourists, guests or other persons who have paid for passage on, or the charter of, the vessel. Commercial super-yacht operations require a permit to operate in the Marine Park.

All other use of a super-yacht is considered to be recreational and does not require a permit.

Vessel length

The length of a vessel determines where it can go in the Marine Park. Ships (greater than 50 metres in length) have special requirements regarding operating in the Designated Shipping Area and General Use Zone and carrying a pilot in compulsory pilotage areas.

Commercial super-yachts over 50 metres in length can apply for a permit to give them greater access to the Marine Park, including access to designated anchorages and transit corridors.

Recreational super-yachts more than 50 metres in length are excluded from the definition of "ship". This means they can operate as a right outside of the Designated Shipping Area and General Use Zone.

Vessel length overall is determined by the subsection 7 or 8 of the *Great Barrier Reef Marine Park Authority Act 1975*. It is either:

- 110 per cent of the vessel's load-line certification, or
- the distance between:
 - a vertical line passing through a point that is the foremost part of the stem; and
 - a vertical line passing through a point that is the aftermost part of the stern.

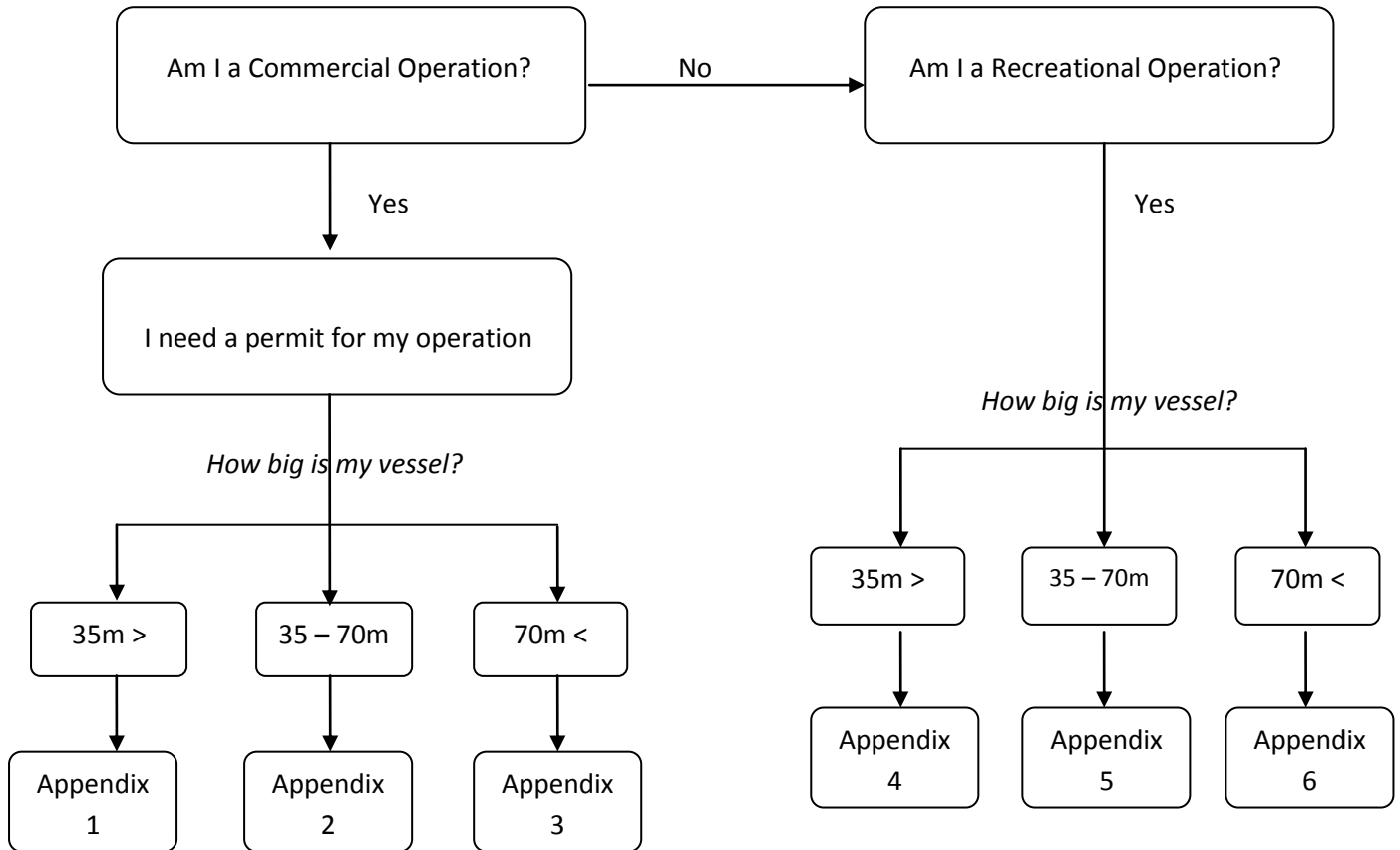
Group size

In high use and particularly sensitive areas, such as off-shore Cairns and Port Douglas, the Whitsundays and the Hinchinbrook area, the Great Barrier Reef Marine Park Authority (GBRMPA) uses group size limits (group size includes the total numbers of both passengers and crew) to manage environmental impacts and the visitor experience.

Group size limits apply equally to commercial and recreational super-yachts.

A quick guide to access information

To simplify the management arrangements for super-yachts, this statement puts forward the following self-assessment diagram:



Once you have selected the category of operation which applies to your vessel, the appropriate access statement can be found in the appendixes.

Appendices

1. Commercial operations – super-yachts less than or equal to 35 metres

What does my permit allow?

Generally, your permit will allow every day 'roving access' to the Marine Park unless you specifically request regular access to nominated locations. Roving access means you are able to visit almost all areas of the Marine Park, provided that you stay no longer than two days at any one reef.

The Marine Park is divided into zones that are described in the **Zoning Plan**. Generally, you will be able to access all of the following zones:

- General Use (light blue) Zone
- Habitat Protection (dark blue) Zone
- Conservation Park (yellow) Zone
- Buffer (olive green) Zone
- Marine National Park (green) Zone

Some areas that experience high use or have high conservation values have additional management provisions. These areas are:

- Offshore Cairns and Port Douglas (covered by the Cairns Planning Area)
- Hinchinbrook (covered by the Hinchinbrook Planning Area)
- The Whitsundays (covered by the Whitsundays Planning Area)

Outside the Planning Areas, you may only visit a location (generally a reef, island or bay) for two days in any seven-day period. To help conserve and protect some important locations, and to provide a range of opportunities for private recreational users, there are some locations that you may not be permitted to visit. These areas will be listed as exclusions on your permit.

Please make sure you know your permit conditions, including any areas that you are not permitted to visit, especially because of your vessel size.

Accessing the Planning Areas

Generally, when you access the Planning Areas you are able to access each Planning Area for up to 50 days per year with a booking.

Cairns Planning Area

The Cairns Planning Area extends from the Ribbon Reefs in the north to the Frankland Islands in the south. It includes all islands and reefs offshore from Port

Douglas and Cairns and covers about six per cent of the Great Barrier Reef Marine Park.

- If your group size is 15 people or less (passengers and crew) you are able to access most Locations in the Planning Area
- If you carry more than 15 people check that your group size matches the size limits for the Location
- Please check the specific management arrangements for Sensitive Locations in the Cairns Planning Area.

Hinchinbrook Planning Area

The Hinchinbrook Planning Area extends from Dunk Island in the north to Halifax Bay in the south. This represents less than one per cent of the Marine Park.

- If your group size is 15 people or less (passengers and crew) you are able to access most Locations in the Planning Area
- If you carry more than 15 people check that your group size matches the size limits for the Location
- If your vessel is more than 20 metres in length you must not operate the vessel in the Missionary Bay Location (Hinchinbrook Planning Area) unless you are using the transit lanes
- When accessing the Hinchinbrook Planning Area, if your vessel is equal to 35 metres in length then additional rules apply
- Please check the specific management arrangements for Sensitive Locations and significant bird sites in the Hinchinbrook Planning Area.

Whitsunday Planning Area

The Whitsunday Planning Area covers waters and islands from Cape Gloucester in the north to Repulse and Thomas Islands in the south. This Area represents about one per cent of the Great Barrier Reef Marine Park.

- If your group size is 15 people or less (passengers and crew) you are able to access most Locations in each Planning Area
- If you carry more than 15 people you will need to check that your group size matches the size limits for the Location
- Please check the specific management arrangements for significant bird sites in the Whitsunday Planning Area.

Are there special rules for some activities?

For some of the activities that you are likely to conduct on your tour or charter, there are some special management arrangements. Please take the time to learn about these for:

- Fishing
- Motorised watersports (for example jetskis)
- Whale watching
- Extended charters

This information is available on the *Onboard* website (www.gbrmpa.gov.au/onboard).

If you use helicopters or semi-submersibles please check your permit for any conditions.

What if I use a mooring?

If you are planning to use public or permitted private moorings, there is some important mooring information that you should understand. This information is available on the *Onboard* website (www.gbrmpa.gov.au/onboard).

Other special management areas

You may not access the following Restricted Access Special Management Areas:

- Raine Island (see Far Northern Special Management Arrangements)
- Moulter Cay (see Far Northern Special Management Arrangements)
- Maclellan Cay (see Far Northern Special Management Arrangements)
- The area adjacent to the Australian Institute of Marine Science (AIMS) in Bowling Green Bay (see Townsville Region Special Management Arrangements)
- One Tree Island (see Capricorn Coast Special Management Arrangements)

Refer to the Zoning Plan for further details.

Appendices

2. Commercial operations – super-yachts between 35 and 70 metres

What does my permit allow?

The Marine Park is divided into zones that are described in the Zoning Plan. Generally, your permit will allow:

- Access for your super-yacht to the General Use (light blue) Zone and Shipping Areas. These areas are shown on zoning maps
- Ability to access other zones, except Preservation (pink) Zones, when transiting to and from or anchoring at a cruise ship anchorage. There is a comprehensive network of designated anchorages throughout the Marine Park which you are able to access
- Ability to access other zones, except Preservation (pink) Zones, within the Planning Areas
- Operation always beyond 500 metres of a reef or coastline except when transiting to and from or anchoring at a cruise ship anchorage.

Generally, your tender will be able to access all of the following zones:

- General Use (light blue) Zone
- Habitat Protection (dark blue) Zone
- Conservation Park (yellow) Zone
- Buffer (olive green) Zone
- Marine National Park (green) Zone

Some areas that experience high use or have high conservation values have additional management provisions. These areas are:

- Offshore Cairns and Port Douglas (covered by the Cairns Planning Area)
- Hinchinbrook
- The Whitsundays

Outside the Planning Areas, you may only visit a location (generally a reef, island or bay) for two days in any seven-day period. To help conserve and protect some important locations, and to provide a range of opportunities for private recreational users, there are some locations that you may not be permitted to visit. These areas will be listed as exclusions on your permit.

There is a comprehensive network of cruise ship anchorages, which you are able to access.

Please make sure you know your permit conditions, including any areas that you are not permitted to visit, especially because of your vessel size.

Accessing the Planning Areas

Generally, when you access the Planning Areas you are able to access each Planning Area for up to 50 days per year with a booking.

Cairns Planning Area

The Cairns Planning Area extends from the Ribbon Reefs in the north to the Frankland Islands in the south. It includes all islands and reefs offshore from Port Douglas and Cairns and covers about six per cent of the Great Barrier Reef Marine Park. The boundary of a 'Location' in this Area is generally 500 metres from the reef edge.

- Generally, a super-yacht 35 to 70 metres in length must remain outside the Locations
- You can enter the Locations to anchor at one of the 87 Reef Anchorages, provided your group size (including crew) is within the group size set for that Location. You can find the exact location of these anchorages in Schedule 8 of the Cairns Area Plan of Management, while Schedule 4 contains the levels of use
- You are able to access cruise ship anchorages with a booking
- You are generally able to anchor outside any Location and use your tender to access the Location, provided that the group size in the tender is correct for that Location. When accessing the Low Island Locality and Green Island Reef Localities 1, 2 and 3 your tender may only be used to transfer passengers to resorts, other vessels or reef pontoons
- Please check the management arrangements for Sensitive Locations in the Cairns Planning Area.

Hinchinbrook Planning Area

The Hinchinbrook Planning Area extends from Dunk Island in the north to Halifax Bay in the south. This represents less than one per cent of the Marine Park. The boundary of a Location in this Area is generally 500 metres from the reef edge.

- Generally, a super-yacht must remain outside the Locations
- You are able to access cruise ship anchorages with a booking

- When using your vessel's tender:
 - You may only transport passengers between the vessel and an island, the mainland, a tourist facility in the Planning Area (for example a jetty) or somewhere outside the Planning Area. Local tourism operators are available to conduct any additional tourist activities
 - Please check the anchoring and mooring arrangements for the Hinchinbrook Planning Area
 - Please use the voluntary transit lanes in the Hinchinbrook Planning Area
 - Please check the special management arrangements in place for Sensitive Locations and significant bird sites in the Planning Area.

Whitsunday Planning Area

The Whitsunday Planning Area covers waters and islands from Cape Gloucester in the north to Repulse and Thomas Islands in the south. This Area represents about one per cent of the Great Barrier Reef Marine Park. The boundary of a Setting in this Area is generally 1500 metres from the reef edge.

- You are able to access a Setting 1 area, subject to any permit requirements
- Generally, a super-yacht must remain outside the other Setting areas
- Generally, you are able to anchor outside a Setting area and use your tender to access the area, provided that the group size in the tender is correct for that area, and subject to any permit requirements
- You are able to access cruise ship anchorages in other Setting areas. Please make a booking with the GBRMPA's Tourism and Recreation Group
- Please check the arrangements for significant bird sites in the Whitsunday Planning Area
- You must observe the seasonal and year round closures of significant bird sites.

Other special management areas

You may not access the following Restricted Access Special Management Areas:

- Raine Island (see Far Northern Special Management Arrangements)
- Moulter Cay (see Far Northern Special Management Arrangements)
- Maclellan Cay (see Far Northern Special Management Arrangements)

- The area adjacent to the Australian Institute of Marine Science (AIMS) in Bowling Green Bay (see Townsville Region Special Management Arrangements)
- One Tree Island (see Capricorn Coast Special Management Arrangements)

Refer to the Zoning Plan for further details.

Can I use my tender for tourism activities?

You can generally use your tender for additional tourist activities such as snorkelling and SCUBA diving if these activities are listed on your permit. Such a permit will also allow tender access to the other zones of Habitat Protection (dark blue), Conservation Park (yellow), Buffer (olive green), Marine National Park (green) and Scientific Research Zone (orange) within Setting Areas. Your tender must remain within three nautical miles of your super-yacht while conducting these additional activities. You must ensure the group size on your tender is within the group size provided for at the location (refer to the specific Planning Areas above).

When operating in the Hinchinbrook Planning Areas, or at the Low Island Locality and Green Island Reef Localities 1, 2 and 3 of the Cairns Planning Area, tenders may only be used to transfer passengers to resorts, other vessels or reef pontoons.

Are there special rules for some activities?

For some of the activities you are likely to conduct on your tour or charter, there are some special management arrangements. Please take the time to learn about these for

- Fishing
- Motorised watersports (for example jetskis)
- Whale watching
- Extended charters

This information is available on the *Onboard* website (www.gbrmpa.gov.au/onboard).

If you use helicopters or semi-submersibles please check your permit for any conditions.

What if I use a mooring?

If you are planning to undertake tours that include the use of a permitted private mooring, there are some important mooring requirements that you should understand. These are available on the *Onboard* website (www.gbrmpa.gov.au/onboard).

Do I need to participate in the ReefVTS?

If your vessel has an overall length of 50 metres or greater you are required to participate in the Coastal Vessel Traffic Service (ReefVTS). This service provides vessels with shipping traffic information, navigational assistance and maritime safety information to aid on-board decision making. Contact the Australian Maritime Safety Authority and Maritime Safety Queensland for more details.

Appendices

3. Commercial operations – super-yachts greater than 70 metres

What does my permit allow?

The Marine Park is divided into zones that are described in the Zoning Plan. Generally, your permit will allow:

- Access for your super-yacht to the General Use (light blue) Zone and Shipping Areas. These areas are shown on zoning maps
- Ability to access other zones, except Preservation (pink) Zones, when transiting to and from or anchoring at a cruise ship anchorage. There is a comprehensive network of designated anchorages throughout the Marine Park which you are able to access
- Ability to access the cruise ship transit areas. These areas are shown on the designated anchorages map
- Ability to access other zones, except Preservation (pink) Zones, within the Planning Areas
- Operation always beyond 500 metres of a reef or coastline except when transiting to and from or anchoring at a cruise ship anchorage.

Generally, your tender will be able to access all of the following zones:

- General Use (light blue) Zone
- Habitat Protection (dark blue) Zone
- Conservation Park (yellow) Zone
- Buffer (olive green) Zone
- Marine National Park (green) Zone

Some areas that experience high use or have high conservation values have additional management provisions. These areas are:

- Offshore Cairns and Port Douglas (covered by the Cairns Planning Area)
- Hinchinbrook
- The Whitsundays

Outside the Planning Areas, you may only visit a location (generally a reef, island or bay) for two days in any seven-day period. To help conserve and protect some

important locations, there are some standard exclusions. All your exclusions will be listed on your permit.

Please make sure you know your permit conditions, including any areas that you are not permitted to visit, especially because of your vessel size.

Accessing the Planning Areas

You are able to access cruise ship anchorages in all Planning Areas. Please make a booking.

Cairns Planning Area

The Cairns Planning Area extends from the Ribbon Reefs in the north to the Frankland Islands in the south. It includes all islands and reefs offshore from Port Douglas and Cairns and covers about six per cent of the Great Barrier Reef Marine Park. The boundary of a 'Location' in this Area is generally 500 metres from the reef edge.

- You are able to access the Cairns Planning Area for up to 50 days per year with a booking
- Your super-yacht must remain outside the Locations
- You are able to anchor outside any Location and use your tender to access the Location, provided that the group size in the tender is correct for that Location. When accessing the Low Island Locality and Green Island Reef Localities 1, 2 and 3 tenders may only be used to transfer passengers to resorts, other vessels or reef pontoons
- Please check the management arrangements for Sensitive Locations in the Cairns Planning Area.

Hinchinbrook Planning Area

The Hinchinbrook Planning Area extends from Dunk Island in the north to Halifax Bay in the south. This represents less than one per cent of the Marine Park. The boundary of a Location in this Area is generally 500 metres from the reef edge.

- You are able to access the Hinchinbrook Planning Area with a booking
- Your super-yacht must remain outside the Locations
- When using your vessel's tender:
 - You may only transport passengers between the vessel and an island, the mainland, a tourist facility in the Planning Area (for example a jetty)

or somewhere outside the Planning Area. Local tourism operators are available to conduct any additional tourist activities

- Please check the anchoring and mooring arrangements for the Hinchinbrook Planning Area
- Please use the voluntary transit lanes in the Hinchinbrook Planning Area
- Please check the special management arrangements in place for Sensitive Locations and significant bird sites in the Planning Area.

Whitsunday Planning Area

The Whitsunday Planning Area covers waters and islands from Cape Gloucester in the north to Repulse and Thomas Islands in the south. This Area represents about one per cent of the Great Barrier Reef Marine Park. The boundary of a Setting in this Area is generally 1500 metres from the reef edge.

- You are able to access the Whitsunday Planning Area for up to 50 days per year with a booking
- Your super-yacht must remain outside the Setting areas
- When using your vessel's tender:
 - You may only transport passengers between the vessel and a tourist facility in the Planning Area (for example a jetty) or somewhere outside the Planning Area. Local tourism operators are available to conduct any additional tourist activities
 - Please check the arrangements for significant bird sites in the Whitsunday Planning Area
 - You must observe the seasonal and year round closures of significant bird sites.

Can I use my tender for tourism activities?

You can generally use your tender for additional tourist activities such as snorkelling and SCUBA diving if these activities are listed on your permit. Your tender must remain within three nautical miles of your super-yacht while conducting these additional activities. You must ensure that the group size on your tender is within the group size provided for at the location (refer to the specific Planning Areas above).

When operating in the Hinchinbrook Planning Areas, or at the Low Island Locality and Green Island Reef Localities 1, 2 and 3 of the Cairns Planning Area, tenders may only be used to transfer passengers to resorts, other vessels or reef pontoons.

Are there special rules for some activities?

For some of the activities that you are likely to conduct on your tour or charter, there are some special management arrangements. Please take the time to learn about these for

- Fishing
- Motorised watersports (for example jetskis)
- Whale watching
- Extended charters

This information is available on the *Onboard* website (www.gbrmpa.gov.au/onboard).

If you use helicopters or semi-submersibles please check your permit for any conditions.

What if I use a mooring?

If you are planning to use public or permitted private moorings, there is some important mooring information that you should understand. This information is available on the *Onboard* website (www.gbrmpa.gov.au/onboard).

What are compulsory pilotage areas?

To provide safer navigation through the Great Barrier Reef waters, super-yachts greater than 70 metres are required under Commonwealth law to carry a licensed pilot in designated compulsory pilotage areas. Penalties exist for both the master and the owner of the super-yacht if not obeyed. The compulsory pilotage areas are:

- The inner route of the Great Barrier Reef Region bounded by the northern boundary of the Great Barrier Reef Region, latitude 16°39.91'S, the Australian mainland and the outer edge of the Great Barrier Reef
- Hydrographer's Passage
- The Whitsundays compulsory pilotage area.

Do I need to participate in the ReefVTS?

As your vessel has an overall length of 50 metres or greater you are required to participate in the Coastal Vessel Traffic Service (ReefVTS). This service provides vessels with shipping traffic information, navigational assistance and maritime safety information to aid on-board decision making. Contact the Australian Maritime Safety Authority and Maritime Safety Queensland for more details.

Other Special Management Areas

You may not access the following Restricted Access Special Management Areas:

- Raine Island (see Far Northern Special Management Arrangements)
- Moulter Cay (see Far Northern Special Management Arrangements)
- Maclellan Cay (see Far Northern Special Management Arrangements)
- The area adjacent to the Australian Institute of Marine Science (AIMS) in Bowling Green Bay (see Townsville Region Special Management Arrangements)
- One Tree Island (see Capricorn Coast Special Management Arrangements)

Refer to the Zoning Plan for further details.

Appendices

4. Recreational operations – super-yachts less than or equal to 35 metres

Where you go

You are able to access most of the Great Barrier Reef Marine Park. Some areas that experience high use or have high conservation values have additional management arrangements. These areas are:

- Offshore Cairns and Port Douglas (covered by the Cairns Planning Area)
- Hinchinbrook
- The Whitsundays

Cairns Planning Area

The Cairns Planning Area extends from the Ribbon Reefs in the north to the Frankland Islands in the south. It includes all islands and reefs offshore from Port Douglas and Cairns and covers about six per cent of the Great Barrier Reef Marine Park. The boundary of a 'Location' in this Area is generally 500 metres from the reef edge.

- You can enter the Locations provided your group size (including crew) is within the following limits set for each Location:
 - Low-use Location - 15 people
 - Moderate-use Location - 60 people
 - Intensive-use Location - no limit
- Some Locations in the Cairns Area have been identified as having special values and are defined as Sensitive Locations. Please refer to the Cairns Area Plan of Management Guide for more information on the Cairns Area Sensitive Locations and the special requirements when accessing these Locations.

For maps and information on the Locations and group sizes refer to the Cairns Area Plan of Management Guide. More detailed information can be found in the Cairns Area Plan of Management.

Hinchinbrook Planning Area

The Hinchinbrook Planning Area extends from Dunk Island in the north to Halifax Bay in the south. This represents less than one per cent of the Marine Park. The boundary of a Location in this Area is generally 500 metres from the reef edge.

- Please use the Hinchinbrook transit lanes
- If your vessel is more than 20 metres in length, you must not operate the vessel in the Missionary Bay Location unless you are using the transit lanes
- If your vessel is equal to 35 metres in length additional rules apply

- When you are in this area please travel at less than:
 - 25 knots within transit lanes
 - 10 knots (less than planing) outside the transit lanes over seagrass beds
 - 10 knots when travelling near a large sea animal (for example, a dugong, dolphin or marine turtle)
- You must operate your tender at less than six knots within 100 metres of Mound (Portaboi) Island or 200 metres of any other significant bird site. The significant bird sites are mainly in the Brook Islands Group with some further south and one to the east of Hinchinbrook Island.

For maps and information on the Locations (including significant bird sites) see the Hinchinbrook Maps. More detailed information can be found in the Hinchinbrook Area Plan of Management.

Whitsunday Planning Area

The Whitsunday Planning Area covers waters and islands from Cape Gloucester in the north to Repulse and Thomas Islands in the south (see map). This Area represents about one per cent of the Great Barrier Reef Marine Park. The boundary of a setting in this Area is generally 1500 metres from the reef edge.

- You are able to access all areas provided that your group size (including crew) and vessel length is correct for that area (see links below)
- Some additional rules apply in Setting 5 areas that limit vessel size to 20 metres
- You must operate your tender at less than six knots when within 200 metres of a significant bird site
- You must observe the seasonal and year round closures of significant bird sites (see the section titled Protecting Birds in the Whitsundays Plan of Management Guide).

For maps and information on the Setting Areas, group sizes and vessel lengths refer to the Whitsundays Plan of Management Guide. More detailed information can be found in the Whitsundays Plan of Management.

Other special management areas

You may not access the following Restricted Access Special Management Areas:

- Raine Island (see zoning map MPZ2)
- Moulter Cay (see zoning map MPZ1)
- MacLennan Cay (see zoning map MPZ1)
- The area adjacent to the Australian Institute of Marine Science (AIMS) in Bowling Green Bay (see zoning map MPZ8)
- One Tree Island (see zoning map MPZ17)

Refer to the Zoning Plan for further details.

What activities you do

For each zone there is a range of activities that may or may not be undertaken (for example, no fishing in the Marine National Park (green) Zone). Use the appropriate zoning maps to check that your activities match the zoning for that area.

Some specific recreational activities may have special rules. Please follow the links for any of the following activities:

- Fishing
- Motorised water sports including use of jetskis
- Whale watching

If you use helicopters or semi-submersibles, please contact the GBRMPA.

Appendices

5. Recreational operations – super-yachts between 35 and 70 metres

You are able to access most of the Great Barrier Reef Marine Park as a recreational user. Some areas that experience high use or have high conservation values have additional management provisions that apply to vessels 35 to 70 metres in length. These areas are:

- Offshore Cairns and Port Douglas (covered by the Cairns Planning Area)
- Hinchinbrook
- The Whitsundays

Cairns Planning Area

The Cairns Planning Area extends from the Ribbon Reefs in the north to the Frankland Islands in the south. It includes all islands and reefs offshore from Port Douglas and Cairns and covers about six per cent of the Great Barrier Reef Marine Park. The boundary of a 'Location' in this Area is generally 500 metres from the reef edge.

- Generally, a super-yacht 35 to 70 metres in length must remain outside the Locations
- You can enter the Locations to anchor at one of the 87 Reef Anchorages, provided your group size (including crew) is within the group size set for that Location:
 - Low-use Location - maximum 15 people
 - Moderate-use Location - maximum 60 people
 - Intensive-use Location - no limit

The Cairns Area Plan of Management Guide gives you an indication of the location of the anchorages. You can find the exact location of these anchorages in Schedule 8 of the Cairns Area Plan of Management, while Schedule 4 lists the levels of use.

- You are able to access cruise ship anchorages, please make a booking
- You are able to anchor outside any Location and use your tender to access the Location, provided the group size in the tender is correct for that Location
- Please check the management arrangements for Sensitive Locations in the Cairns Planning Area.

For maps and information on the Locations and group sizes refer to the Cairns Area Plan of Management Guide. More detailed information can be found in the Cairns Area Plan of Management.

Hinchinbrook Planning Area

The Hinchinbrook Planning Area extends from Dunk Island in the north to Halifax Bay in the south. This represents less than one per cent of the Marine Park. The boundary of a 'Location' in this Area is generally 500 metres from the reef edge.

- Generally, a super-yacht must remain outside the Locations
- You are able to access cruise ship anchorages, please make a booking
- You are able to anchor outside a Location and use your tender to access the Location
- When using your vessel's tender please use the Hinchinbrook Planning Area voluntary transit lanes
- When accessing this area with your tender, please travel at less than:
 - 25 knots within transit lanes
 - 10 knots (less than planing) outside the transit lanes over seagrass beds
 - 10 knots when travelling near a large sea animal (for example, a dugong, dolphin or marine turtle)
- You must operate your tender at less than six knots within 100 metres of Mound (Portaboi) Island or 200 metres of any other significant bird site. The significant bird sites are mainly in the Brook Islands Group with some further south and one to the east of Hinchinbrook Island.

For maps and information on the Locations (including significant bird sites) see the Hinchinbrook Maps. More detailed information can be found in the Hinchinbrook Area Plan of Management.

Whitsunday Planning Area

The Whitsunday Planning Area covers waters and islands from Cape Gloucester in the north to Repulse and Thomas Islands in the south (see map). This Area represents about one per cent of the Great Barrier Reef Marine Park. The boundary of a setting in this Area is generally 1500 metres from the reef edge.

- You are able to access a Setting 1 area
- Generally, a super-yacht must remain outside all other Setting areas
- You are able to anchor outside a Setting area and use your tender to access the area, provided the group size in the tender is correct for that area
- You are able to access cruise ship anchorages in the Setting areas, please make a booking
- You must operate your tender at less than six knots within 200 metres of a significant bird site
- You must observe the seasonal and year round closures of significant bird sites.

For maps and information on the Setting Areas, group sizes and vessel lengths refer to the Whitsundays Plan of Management Guide. More detailed information can be found in the Whitsundays Plan of Management.

Other Special Management Areas

You may not access the following Restricted Access Special Management Areas:

- Raine Island (see zoning map MPZ2)
- Moulter Cay (see zoning map MPZ1)
- MacLennan Cay (see zoning map MPZ1)
- The area adjacent to the Australian Institute of Marine Science (AIMS) in Bowling Green Bay (see zoning map MPZ8)
- One Tree Island (see zoning map MPZ17)

Refer to the Zoning Plan for further details.

What activities you do

For each zone there is a range of activities that may or may not be undertaken (for example, no fishing in the Marine National Park (green) Zone). Use the appropriate zoning maps to check that your activities match the zoning for that area.

Some specific recreational activities may have special rules. Please follow the links for any of the following activities:

- Fishing
- Motorised water sports including use of jetskis
- Whale watching

If you use helicopters or semi-submersibles, please contact the GBRMPA.

Participation in the ReefVTS

If your vessel has an overall length of 50 metres or greater you are required to participate in the Coastal Vessel Traffic Service (ReefVTS). This service provides vessels with shipping traffic information, navigational assistance and maritime safety information to aid on-board decision making. Contact the Australian Maritime Safety Authority and Maritime Safety Queensland for more details.

Appendices

6. Recreational operations – super-yachts greater than 70 metres

You are able to access most of the Great Barrier Reef Marine Park as a recreational user. Some areas that experience high use or have high conservation values have additional management provisions that apply to vessels over 70 metres in overall length. These areas are:

- Offshore Cairns and Port Douglas (covered by the Cairns Planning Area)
- Hinchinbrook
- The Whitsundays

Cairns Planning Area

The Cairns Planning Area extends from the Ribbon Reefs in the north to the Frankland Islands in the south. It includes all islands and reefs offshore from Port Douglas and Cairns and covers about six per cent of the Great Barrier Reef Marine Park. The boundary of a 'Location' in this Area is generally 500 metres from the reef edge.

- Generally, a super-yacht must remain outside the Locations
- You are able to access cruise ship anchorages, please make a booking
- You are able to anchor outside any Location and use your tender to access the Location, provided the group size in the tender is correct for that Location (see the Cairns Area Plan of Management Guide for maps identifying the different types of Locations):
 - Low-use Location - maximum 15 people
 - Moderate-use Location - maximum 60 people
 - Intensive-use Location - no limit.

For maps and information on the Locations and group sizes refer to the Cairns Area Plan of Management Guide. More detailed information can be found in the Cairns Area Plan of Management.

Hinchinbrook Planning Area

The Hinchinbrook Planning Area extends from Dunk Island in the north to Halifax Bay in the south. This represents less than one per cent of the Marine Park. The boundary of a 'Location' in this Area is generally 500 metres from the reef edge.

- Generally, a super-yacht must remain outside the Locations
- You are able to access cruise ship anchorages, please make a booking
- You are able to anchor outside a Location and use your tender to access the Location
- When using your vessel's tender please use the Hinchinbrook Planning Area voluntary transit lanes

- When accessing this area with your tender, please observe the following speed limits:
 - 25 knots within transit lanes
 - 10 knots (less than planing) outside the transit lanes over seagrass beds
 - 10 knots when travelling near a large sea animal (for example, a dugong, dolphin or marine turtle)
- You must operate your tender at less than six knots within 100 metres of the Mound (Portaboi) Island or 200 metres of any other significant bird site. The significant bird sites are mainly in the Brook Islands Group with some further south and one to the east of Hinchinbrook Island.

For maps and information on the Locations (including significant bird sites) see the Hinchinbrook Maps. More detailed information can be found in the Hinchinbrook Area Plan of Management.

Whitsunday Planning Area

The Whitsunday Planning Area covers waters and islands from Cape Gloucester in the north to Repulse and Thomas Islands in the south (see map). This Area represents about one per cent of the Great Barrier Reef Marine Park. The boundary of a setting in this Area is generally 1500 metres from the reef edge.

- Generally, a super-yacht must remain outside the Setting areas
- You are able to anchor outside a Setting area and use your tender to access the area, provided the group size in the tender is correct for that area
- You are able to access cruise ship anchorages, please make a booking
- You must operate your tender at less than six knots within 200 metres of a significant bird site
- You must observe the seasonal and year round closures of significant bird sites.

For maps and information on the Setting Areas, group sizes and vessel lengths refer to the Whitsundays Plan of Management Guide. More detailed information can be found in the Whitsundays Plan of Management.

Other Special Management Areas

You may not access the following Restricted Access Special Management Areas:

- Raine Island (see zoning map MPZ2)
- Moulter Cay (see zoning map MPZ1)
- MacLennan Cay (see zoning map MPZ1)
- The area adjacent to the Australian Institute of Marine Science (AIMS) in Bowling Green Bay (see zoning map MPZ8)
- One Tree Island (see zoning map MPZ17)

Refer to the Zoning Plan for further details.

What activities you do

For each zone there is a range of activities that may or may not be undertaken (for example, no fishing in the Marine National Park (green) Zone). Use the appropriate zoning maps to check that your activities match the zoning for that area.

Some specific recreational activities may have special rules. Please follow the links for any of the following activities:

- Fishing
- Motorised water sports including use of jetskis
- Whale watching

If you use helicopters or semi-submersibles, please contact the GBRMPA.

Compulsory pilotage areas

To provide safer navigation through the Great Barrier Reef waters, super-yachts greater than 70 metres are required under Commonwealth law to carry a licensed pilot in designated compulsory pilotage areas. Penalties exist for both the master and the owner of the super-yacht if not obeyed. The compulsory pilotage areas are:

- The inner route of the Great Barrier Reef Region bounded by the northern boundary of the Great Barrier Reef Region, latitude 16°39.91'S, the Australian mainland and the outer edge of the Great Barrier Reef
- Hydrographer's Passage
- The Whitsundays compulsory pilotage area.

Participation in the ReefVTS

If your vessel has an overall length of 50 metres or greater you are required to participate in the Coastal Vessel Traffic Service (ReefVTS). This service provides vessels with shipping traffic information, navigational assistance and maritime safety information to aid on-board decision making. Contact the Australian Maritime Safety Authority and Maritime Safety Queensland for more details.